



ELECTRONIC COPY

LG784698947
Report verification at igi.org



March 27, 2026

IGI Report Number **LG784698947**

Description **LABORATORY GROWN DIAMOND**

Shape and Cutting Style **EMERALD CUT**

Measurements **9.81 X 6.81 X 4.46 MM**

GRADING RESULTS

Carat Weight **2.91 CARATS**

Color Grade **D**

Clarity Grade **VVS 2**

March 27, 2026
IGI Report Number **LG784698947**
Description **LABORATORY GROWN DIAMOND**
Shape and Cutting Style **EMERALD CUT**
Measurements **9.81 X 6.81 X 4.46 MM**

GRADING RESULTS

Carat Weight **2.91 CARATS**

Color Grade **D**

Clarity Grade **VVS 2**

ADDITIONAL GRADING INFORMATION

Polish **EXCELLENT**

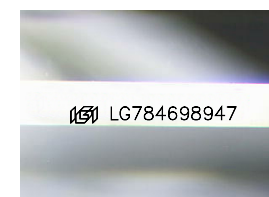
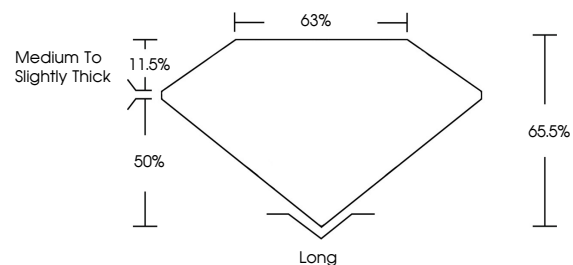
Symmetry **EXCELLENT**

Fluorescence **NONE**

Inscription(s) **IGI LG784698947**

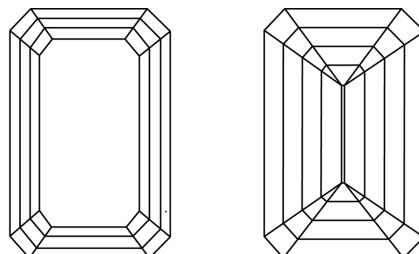
Comments: This Laboratory Grown Diamond was created by Chemical Vapor Deposition (CVD) growth process. Type IIa

PROPORTIONS



Sample Image Used

CLARITY CHARACTERISTICS



KEY TO SYMBOLS

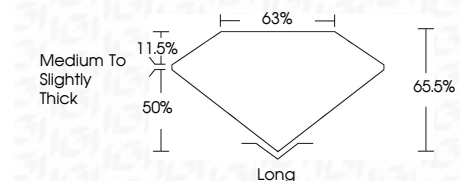
Red symbols indicate internal characteristics.
Green symbols indicate external characteristics.

COLOR

D E F G H I J Faint Very Light Light

CLARITY

FL	IF	VVS ¹⁻²	VS ¹⁻²	SI ¹⁻²	I ¹⁻³
Flawless	Internally Flawless	Very Very Slightly Included	Very Slightly Included	Slightly Included	Included



ADDITIONAL GRADING INFORMATION

Polish **EXCELLENT**

Symmetry **EXCELLENT**

Fluorescence **NONE**

Inscription(s) **IGI LG784698947**

Comments: This Laboratory Grown Diamond was created by Chemical Vapor Deposition (CVD) growth process. Type IIa



March 27, 2026
IGI Report No **LG784698947**
EMERALD CUT
9.81 X 6.81 X 4.46 MM
2.91 CARATS
D
VVS 2
65.5%
50%
Medium to Slightly Thick
Long
EXCELLENT
EXCELLENT
NONE
IGI LG784698947
Comments: This Laboratory Grown Diamond was created by Chemical Vapor Deposition (CVD) growth process. Type IIa