



ELECTRONIC COPY

LG785611950
Report verification at igi.org



March 23, 2026
IGI Report Number LG785611950
Description LABORATORY GROWN DIAMOND
Shape and Cutting Style ROUND BRILLIANT
Measurements 7.34 - 7.41 X 4.64 MM
GRADING RESULTS
Carat Weight 1.57 CARAT
Color Grade E
Clarity Grade VS 2
Cut Grade EXCELLENT

March 23, 2026
IGI Report Number LG785611950
Description LABORATORY GROWN DIAMOND
Shape and Cutting Style ROUND BRILLIANT
Measurements 7.34 - 7.41 X 4.64 MM

GRADING RESULTS

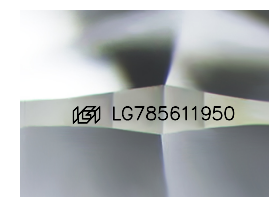
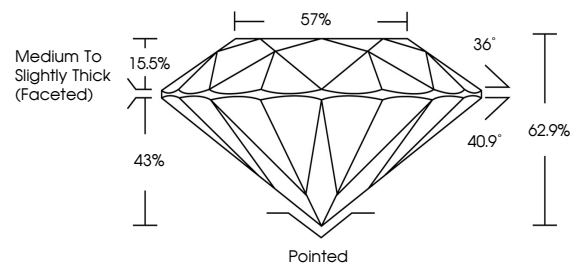
Carat Weight 1.57 CARAT
Color Grade E
Clarity Grade VS 2
Cut Grade EXCELLENT

ADDITIONAL GRADING INFORMATION

Polish EXCELLENT
Symmetry EXCELLENT
Fluorescence NONE
Inscription(s) IGI LG785611950

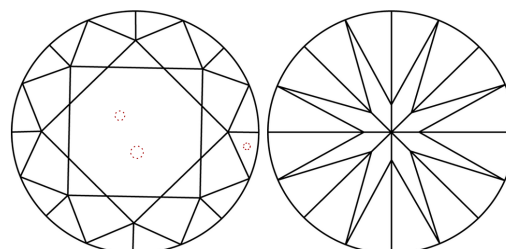
Comments: This Laboratory Grown Diamond was created by Chemical Vapor Deposition (CVD) growth process. Type IIa

PROPORTIONS



Sample Image Used

CLARITY CHARACTERISTICS



KEY TO SYMBOLS

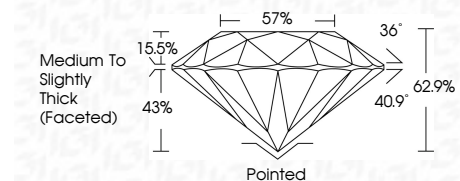
Red symbols indicate internal characteristics.
Green symbols indicate external characteristics.

COLOR

D E F G H I J Faint Very Light Light

CLARITY

FL IF VS 1-2 VS 1-2 SI 1-2 I 1-3
Flawless Internally Flawless Very Very Slightly Slightly Slightly Included



ADDITIONAL GRADING INFORMATION

Polish EXCELLENT
Symmetry EXCELLENT
Fluorescence NONE
Inscription(s) IGI LG785611950
Comments: This Laboratory Grown Diamond was created by Chemical Vapor Deposition (CVD) growth process. Type IIa



March 23, 2026
IGI Report No LG785611950
ROUND BRILLIANT
1.57 CARAT E
VS 2 EXCELLENT
7.34 - 7.41 X 4.64 MM
62.9% 57%
Medium To Slightly Thick (Faceted)
Pointed EXCELLENT EXCELLENT NONE
None IGI LG785611950
Comments: This Laboratory Grown Diamond was created by Chemical Vapor Deposition (CVD) growth process. Type IIa