



**ELECTRONIC COPY**

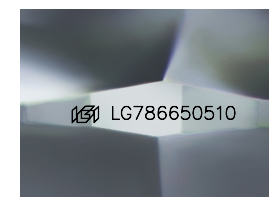
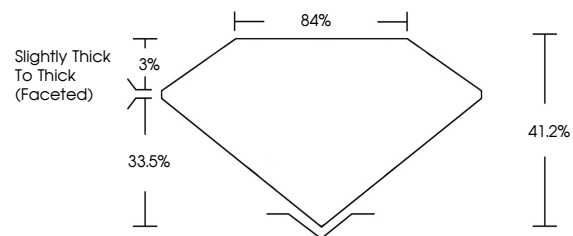
LG786650510  
Report verification at [igi.org](http://igi.org)



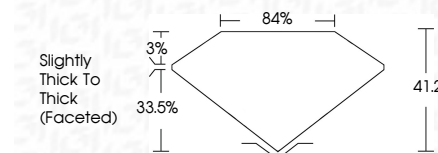
March 30, 2026  
IGI Report Number **LG786650510**  
Description **LABORATORY GROWN DIAMOND**  
Shape and Cutting Style **ROUND ROSE CUT**  
Measurements **7.62 - 7.54 X 3.11 MM**  
**GRADING RESULTS**  
Carat Weight **1.47 CARAT**  
Color Grade **FANCY VIVID PINK**  
Clarity Grade **VS 1**

March 30, 2026  
IGI Report Number **LG786650510**  
Description **LABORATORY GROWN DIAMOND**  
Shape and Cutting Style **ROUND ROSE CUT**  
Measurements **7.62 - 7.54 X 3.11 MM**  
**GRADING RESULTS**  
Carat Weight **1.47 CARAT**  
Color Grade **FANCY VIVID PINK**  
Clarity Grade **VS 1**

**PROPORTIONS**



Sample Image Used



**ADDITIONAL GRADING INFORMATION**

Polish **EXCELLENT**  
Symmetry **EXCELLENT**  
Fluorescence **SLIGHT**  
Inscription(s) **IGI LG786650510**

Comments: This Laboratory Grown Diamond was created by Chemical Vapor Deposition (CVD) growth process. Indications of post-growth treatment.

**ADDITIONAL GRADING INFORMATION**

Polish **EXCELLENT**  
Symmetry **EXCELLENT**  
Fluorescence **SLIGHT**  
Inscription(s) **IGI LG786650510**

Comments: This Laboratory Grown Diamond was created by Chemical Vapor Deposition (CVD) growth process. Indications of post-growth treatment.

**COLOR**

D E F G H I J Faint Very Light Light

**CLARITY**

FL	IF	VS <sup>1-2</sup>	VS <sup>1-2</sup>	SI <sup>1-2</sup>	I <sup>1-3</sup>
Flawless	Internally Flawless	Very Very Slightly Included	Very Slightly Included	Slightly Included	Included



**IGI**



March 30, 2026  
IGI Report No **LG786650510**  
**ROUND ROSE CUT**  
Carat Weight **1.47 CARAT**  
Color Grade **FANCY VIVID PINK**  
Clarity Grade **VS 1**  
Table **84%**  
Girdle **Slightly Thick To Thick (Faceted)**  
Culet **EXCELLENT**  
Polish **EXCELLENT**  
Symmetry **EXCELLENT**  
Fluorescence **SLIGHT**  
Inscription(s) **IGI LG786650510**  
Comments: This Laboratory Grown Diamond was created by Chemical Vapor Deposition (CVD) growth process. Indications of post-growth treatment.