



ELECTRONIC COPY

LABORATORY GROWN DIAMOND REPORT

| | |
|-------------------------|-----------------------------|
| December 11, 2023 | |
| IGI Report Number | LG610340243 |
| Description | LABORATORY GROWN DIAMOND |
| Shape and Cutting Style | PRINCESS CUT |
| Measurements | 7.81 X 7.69 X 5.52 MM |

GRADING RESULTS

| | |
|---------------|--------------------|
| Carat Weight | 3.01 CARATS |
| Color Grade | FANCY INTENSE PINK |
| Clarity Grade | VS 1 |

ADDITIONAL GRADING INFORMATION

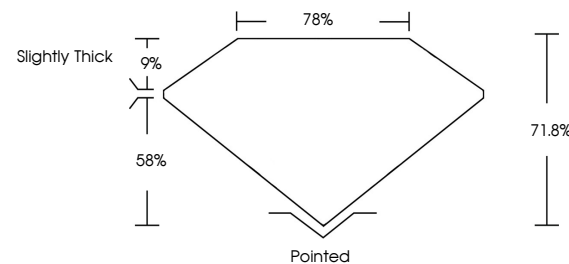
| | |
|----------------|----------------|
| Polish | EXCELLENT |
| Symmetry | EXCELLENT |
| Fluorescence | SLIGHT |
| Inscription(s) | 15 LG610340243 |

Comments: This Laboratory Grown Diamond was created by Chemical Vapor Deposition (CVD) growth process.
Indications of post-growth treatment.

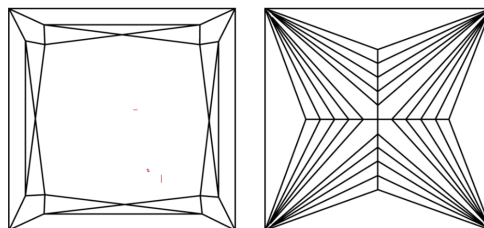
LABORATORY GROWN DIAMOND REPORT

LG610340243
Report verification at igi.org

PROPORTIONS



CLARITY CHARACTERISTICS



KEY TO SYMBOLS

Red symbols indicate internal characteristics.
Green symbols indicate external characteristics.

LABORATORY GROWN
DIAMOND REPORT

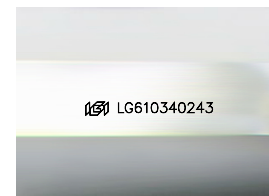
GRADING SCALES

CLARITY

| IF | VVS ¹⁻² | VS ¹⁻² | SI ¹⁻² | I ¹⁻³ |
|------------------------|--------------------------------|---------------------------|----------------------|------------------|
| Internally Flawless | Very Very Slightly Included | Very Slightly Included | Slightly Included | Included |

COLOR

| | | | | | | | | | |
|------------|---|---|-------------|---|-------|---|---------------|------------|-------------|
| D | E | F | G | H | I | J | Faint | Very Light | Light |
| Light Tint | | | Fancy Light | | Fancy | | Fancy Intense | | Fancy Vivid |



Sample Image Used

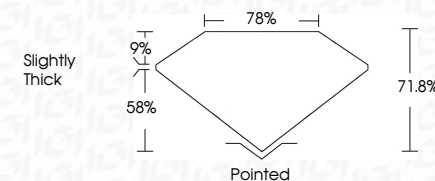


© IGI 2020, International Gemological Institute

FD - 10 20

LABORATORY GROWN DIAMOND REPORT

| | |
|-------------------------|-----------------------------|
| December 11, 2023 | |
| IGI Report Number | LG610340243 |
| Description | LABORATORY GROWN DIAMOND |
| Shape and Cutting Style | PRINCESS CUT |
| Measurements | 7.81 X 7.69 X 5.52 MM |
| GRADING RESULTS | |
| Carat Weight | 3.01 CARATS |
| Color Grade | FANCY INTENSE PINK |
| Clarity Grade | VS 1 |



ADDITIONAL GRADING INFORMATION

| | |
|--|---------------------------|
| Polish | EXCELLENT |
| Symmetry | EXCELLENT |
| Fluorescence | SLIGHT |
| Inscription(s) | LG LG610340243 |
| <p>Comments: This Laboratory Grown Diamond was created by Chemical Vapor Deposition (CVD) growth process.</p> <p>Indications of post-growth treatment.</p> | |



December 11, 2023
 IGI Report No LG610340243
 PRINCESS CLIT

| | |
|---------------|--------------------|
| Carat Weight | 3.01 CARATS |
| Color Grade | FANCY INTENSE PINK |
| Clarity Grade | VS 1 |
| Depth | 71.6% |
| Table | 78% |
| Grade | Slightly Thick |
| Culet | Pointed |
| Polish | EXCELLENT |
| Symmetry | EXCELLENT |
| Fluorescence | SLIGHT |

Comments:
This Laboratory Grown Diamond was created by Chemical Vapor Deposition (CVD) growth process.
indications of post-growth treatment.