



ELECTRONIC COPY

LG623422183

Report verification at igi.org

LABORATORY GROWN DIAMOND REPORT

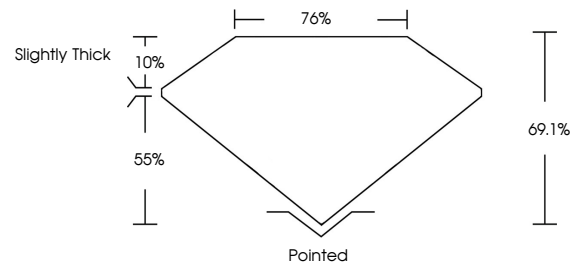
February 28, 2024
 IGI Report Number **LG623422183**
 Description **LABORATORY GROWN
DIAMOND**
 Shape and Cutting Style **PRINCESS CUT**
 Measurements **6.95 X 6.89 X 4.76 MM**
GRADING RESULTS
 Carat Weight **2.02 CARATS**
 Color Grade **FANCY VIVID GREEN**
 Clarity Grade **VS 2**

ADDITIONAL GRADING INFORMATION

Polish **VERY GOOD**
 Symmetry **EXCELLENT**
 Fluorescence **VERY SLIGHT**
 Inscription(s) **LG623422183**

Comments: This Laboratory Grown Diamond was created by Chemical Vapor Deposition (CVD) growth process.
 Indications of post-growth treatment.

PROPORTIONS



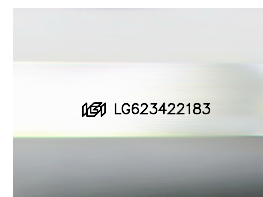
GRADING SCALES

CLARITY

IF	VVS ¹⁻²	VS ¹⁻²	SI ¹⁻²	I ¹⁻³
Internally Flawless	Very Very Slightly Included	Very Slightly Included	Slightly Included	Included

COLOR

D	E	F	G	H	I	J	Faint	Very Light	Light
Light Tint	Fancy Light	Fancy	Fancy Intense	Fancy Vivid					

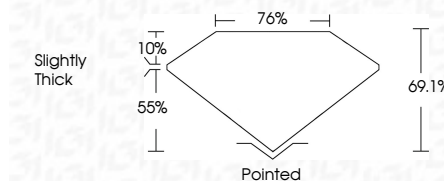


Sample Image Used

February 28, 2024
 IGI Report Number **LG623422183**
 Description **LABORATORY GROWN
DIAMOND**
 Shape and Cutting Style **PRINCESS CUT**
 Measurements **6.95 X 6.89 X 4.76 MM**
GRADING RESULTS
 Carat Weight **2.02 CARATS**
 Color Grade **FANCY VIVID GREEN**
 Clarity Grade **VS 2**

ADDITIONAL GRADING INFORMATION

Polish **VERY GOOD**
 Symmetry **EXCELLENT**
 Fluorescence **VERY SLIGHT**
 Inscription(s) **LG623422183**
 Comments: This Laboratory Grown Diamond was created by Chemical Vapor Deposition (CVD) growth process.
 Indications of post-growth treatment.



IGI

February 28, 2024
 IGI Report No **LG623422183**
PRINCESS CUT
2.02 CARATS
 Carat Weight **FANCY VIVID GREEN**
 Color Grade **VS 2**
 Clarity Grade **69.1%**
 Depth **76%**
 Table **Slightly Thick**
 Girdle **Pointed**
 Culet **VERY GOOD**
 Polish **EXCELLENT**
 Symmetry **VERY SLIGHT**
 Fluorescence **VERY SLIGHT**
 Inscription(s) **LG623422183**
 Comments: This Laboratory Grown Diamond was created by Chemical Vapor Deposition (CVD) growth process.
 Indications of post-growth treatment.