



ELECTRONIC COPY

LABORATORY GROWN DIAMOND REPORT

March 4, 2024	
IGI Report Number	LG623474665
Description	LABORATORY GROWN DIAMOND
Shape and Cutting Style	EMERALD CUT
Measurements	7.99 X 5.37 X 3.12 MM

GRADING RESULTS

Carat Weight	1.38 CARAT
Color Grade	FANCY INTENSE PINK
Clarity Grade	VS 1

ADDITIONAL GRADING INFORMATION

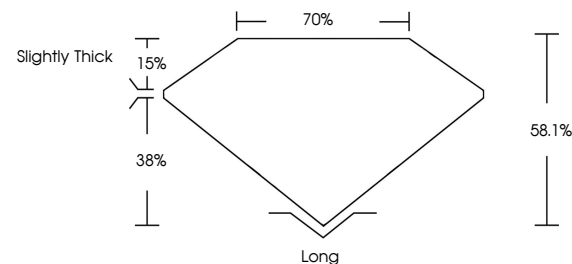
Polish	EXCELLENT
Symmetry	VERY GOOD
Fluorescence	SLIGHT
Inscription(s)	 LG623474665

Comments: This Laboratory Grown Diamond was created by Chemical Vapor Deposition (CVD) growth process.
Indications of post-growth treatment.

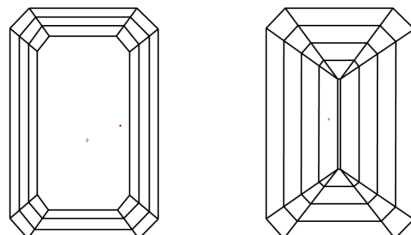
LABORATORY GROWN DIAMOND REPORT

LG623474665
Report verification at igi.org

PROPORTIONS



CLARITY CHARACTERISTICS



KEY TO SYMBOLS

Red symbols indicate internal characteristics.
Green symbols indicate external characteristics.

LABORATORY GROWN
DIAMOND REPORT

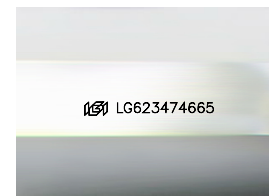
GRADING SCALES

CLARITY

IF	VVS ¹⁻²	VS ¹⁻²	SI ¹⁻²	I ¹⁻³
Internally Flawless	Very Very Slightly Included	Very Slightly Included	Slightly Included	Included

COLOR

D	E	F	G	H	I	J	Faint	Very Light	Light
Light Tint			Fancy Light		Fancy		Fancy Intense		Fancy Vivid



Sample Image Used

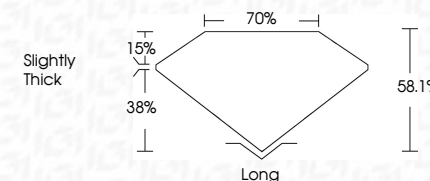


© IGI 2020, International Gemological Institute

FD - 10 20



March 4, 2024	
IGI Report Number	LG623474665
Description	LABORATORY GROWN DIAMOND
Shape and Cutting Style	EMERALD CUT
Measurements	7.99 X 5.37 X 3.12 MM
GRADING RESULTS	
Carat Weight	1.38 CARAT
Color Grade	FANCY INTENSE PINK
Clarity Grade	VS 1



ADDITIONAL GRADING INFORMATION

Polish	EXCELLENT
Symmetry	VERY GOOD
Fluorescence	SLIGHT
Inscription(s)	(15) LG623474665

Comments: This Laboratory Grown Diamond was created by Chemical Vapor Deposition (CVD) growth process.
Indications of post-growth treatment.

March 4, 2024
GI Report No LG623474665
EMERALD CIT

1.99 X 5.37 X 3.12 MM	Carat Weight	1.98 CARAT
	Color Grade	FANCY INTENSE PINK
	Clarity Grade	VS 1
	Depth	66.1%
	Table	70%
	Grade	Slightly Thick
	Culet	Long
	Polish	EXCELLENT
	Symmetry	VERY GOOD
	Fluorescence	SLIGHT
	Report #	6461125409-1746465

Comments:
This Laboratory Grown Diamond was created by Chemical Vapor Deposition (CVD) growth process.