



ELECTRONIC COPY

LABORATORY GROWN DIAMOND REPORT

March 15, 2024	
IGI Report Number	LG626458788
Description	LABORATORY GROWN DIAMOND
Shape and Cutting Style	MARQUISE BRILLIANT
Measurements	15.52 X 7.19 X 4.36 MM

GRADING RESULTS

Carat Weight	2.74 CARATS
Color Grade	F
Clarity Grade	VVS 2

ADDITIONAL GRADING INFORMATION

Polish	EXCELLENT
Symmetry	EXCELLENT
Fluorescence	NONE
Inscription(s)	 LG626458788

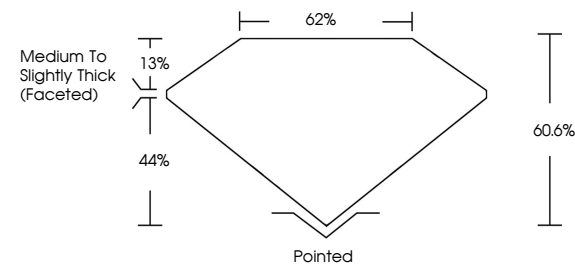
Comments: This Laboratory Grown Diamond was created by Chemical Vapor Deposition (CVD) growth process and may include post-growth treatment.
Type IIa

LABORATORY GROWN DIAMOND REPORT

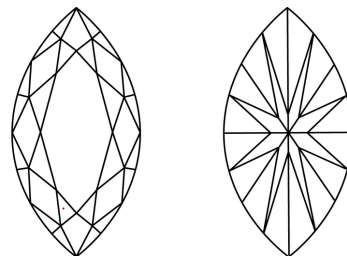
LG626458788

Report verification at igi.org

PROPORTIONS



CLARITY CHARACTERISTICS



KEY TO SYMBOLS

Red symbols indicate internal characteristics.
Green symbols indicate external characteristics.

LABORATORY GROWN
DIAMOND REPORT

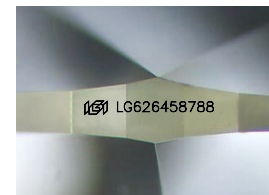
GRADING SCALES

CLARITY

IF	VVS ¹⁻²	VS ¹⁻²	SI ¹⁻²	I ¹⁻³
Internally Flawless	Very Very Slightly Included	Very Slightly Included	Slightly Included	Included

COLOR

D E F G H I J Faint Very Light Light



Sample Image Used



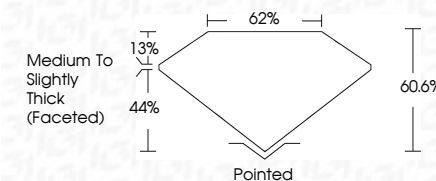
© IGI 2020, International Gemological Institute

FD - 10 20



LABORATORY GROWN DIAMOND REPORT

March 15, 2024	
IGI Report Number	LG626458788
Description	LABORATORY GROWN DIAMOND
Shape and Cutting Style	MARQUISE BRILLIANT
Measurements	15.52 X 7.19 X 4.36 MM
GRADING RESULTS	
Carat Weight	2.74 CARATS
Color Grade	F
Clarity Grade	VVS 2



ADDITIONAL GRADING INFORMATION

Polish	EXCELLENT
Symmetry	EXCELLENT
Fluorescence	NONE
Inscription(s)	151 LG626458788

Comments: This Laboratory Grown Diamond was created by Chemical Vapor Deposition (CVD) growth process and may include post-growth treatment.
Type IIa

March 15, 2024
GI Report No LG626458788
MARQUISE BRILLIANT

15.62 X 7.19 X 4.56 MM	274 CARATS
Carat Weight	VVS 2
Color Grade	60.6%
Clarity Grade	62%
Depth	Medium To Slightly Thick (Faceted)
Table	Pointed
Grade	EXCELLENT
Culet	EXCELLENT
Polish	SYMMETRY
Symmetry	FLUORESCENCE
Fluorescence	NONE
Measurements (mm)	4mm 2mm 4mm 2mm

Comments:
This Laboratory Grown Diamond was
created by Chemical Vapor Deposition
(CVD) growth process and may include
post-growth treatment.