



ELECTRONIC COPY

LABORATORY GROWN DIAMOND REPORT

March 19, 2024	
IGI Report Number	LG626487744
Description	LABORATORY GROWN DIAMOND
Shape and Cutting Style	OVAL BRILLIANT
Measurements	9.29 X 6.24 X 3.79 MM

GRADING RESULTS

Carat Weight	1.36 CARAT
Color Grade	FANCY YELLOW
Clarity Grade	VS 1

ADDITIONAL GRADING INFORMATION

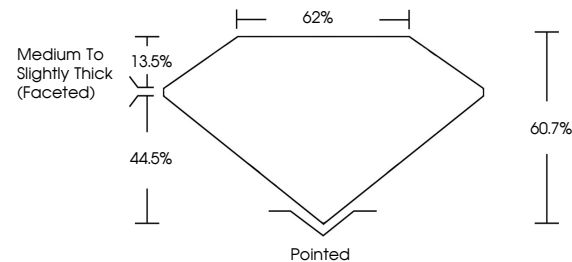
Polish	EXCELLENT
Symmetry	EXCELLENT
Fluorescence	NONE
Inscription(s)	15 LG626487744

Comments: This Laboratory Grown Diamond was created by Chemical Vapor Deposition (CVD) growth process and may include post-growth treatment.

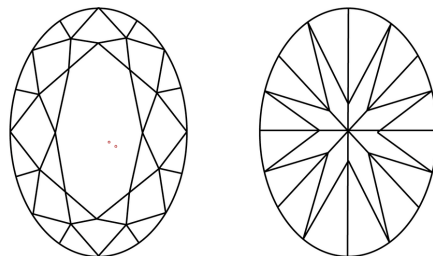
LABORATORY GROWN DIAMOND REPORT

LG626487744
Report verification at igi.org

PROPORTIONS



CLARITY CHARACTERISTICS



KEY TO SYMBOLS

Red symbols indicate internal characteristics.
Green symbols indicate external characteristics.

LABORATORY GROWN
DIAMOND REPORT

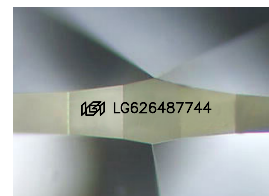
GRADING SCALES

CLARITY

IF	VVS ¹⁻²	VS ¹⁻²	SI ¹⁻²	I ¹⁻³
Internally Flawless	Very Very Slightly Included	Very Slightly Included	Slightly Included	Included

COLOR

D	E	F	G	H	I	J	Faint	Very Light	Light
Light Tint			Fancy Light		Fancy		Fancy Intense		Fancy Vivid



Sample Image Used

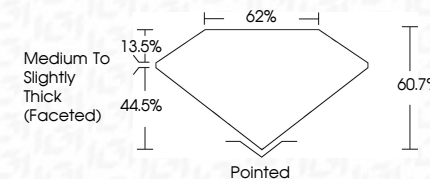


© IGI 2020, International Gemological Institute

FD - 10 20



March 19, 2024	
IGI Report Number	LG626487744
Description	LABORATORY GROWN DIAMOND
Shape and Cutting Style	OVAL BRILLIANT
Measurements	9.29 X 6.24 X 3.79 MM
GRADING RESULTS	
Carat Weight	1.36 CARAT
Color Grade	FANCY YELLOW
Clarity Grade	VS 1



ADDITIONAL GRADING INFORMATION

Polish	EXCELLENT
Symmetry	EXCELLENT
Fluorescence	NONE
Inscription(s)	(16) LG626487744

Comments: This Laboratory Grown Diamond was created by Chemical Vapor Deposition (CVD) growth process and may include post-growth treatment.

March 19, 2024
GI Report No LG626487744
OVAL BRILLIANT

0.229 X 6.24 X 3.79 MM	Carat Weight	1.36 CARAT
	Color Grade	FANCY YELLOW
	Clarity Grade	VS 1
	Depth	60.7%
	Table	62%
	Grade	Medium To Slightly Thick (fostered)
	Culet	Pointed
	Polish	EXCELLENT
	Symmetry	EXCELLENT
	Fluorescence	NONE
	Report Number	4881C260482744

Comments:
This Laboratory Grown Diamond was created by Chemical Vapor Deposition (CVD) growth process and may include