



ELECTRONIC COPY

LABORATORY GROWN DIAMOND REPORT

April 8, 2024

IGI Report Number **LG627423752**

Description	LABORATORY GROWN DIAMOND
-------------	-----------------------------

Shape and Cutting Style **OVAL MODIFIED BRILLIANT**

Measurements 8.41 X 5.80 X 3.64 MM

GRADING RESULTS

Carat Weight 1.20 CARAT

Color Grade **FANCY INTENSE YELLOW**

Clarity Grade VS 2

ADDITIONAL GRADING INFORMATION

Polish **EXCELLENT**

Symmetry **EXCELLENT**

Fluorescence **NONE**Inscription(s)  LG627423752

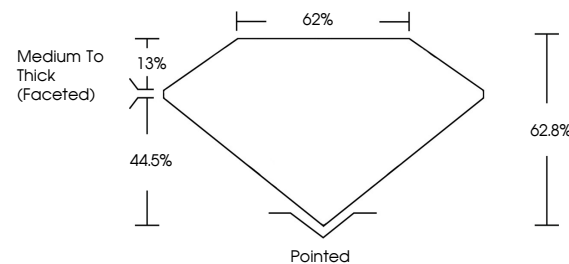
Comments: This Laboratory Grown Diamond was created by Chemical Vapor Deposition (CVD) growth process and may include post-growth treatment.

LABORATORY GROWN DIAMOND REPORT

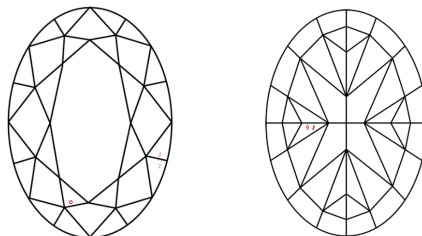
LG627423752

Report verification at igi.org

PROPORTIONS



CLARITY CHARACTERISTICS



KEY TO SYMBOLS

Red symbols indicate internal characteristics.
Green symbols indicate external characteristics.

LABORATORY GROWN
DIAMOND REPORT

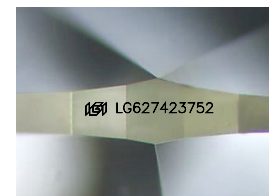
GRADING SCALES

CLARITY

IF	VVS ¹⁻²	VS ¹⁻²	SI ¹⁻²	I ¹⁻³
Internally Flawless	Very Very Slightly Included	Very Slightly Included	Slightly Included	Included

COLOR

D	E	F	G	H	I	J	Faint	Very Light	Light
Light Tint			Fancy Light		Fancy		Fancy Intense		Fancy Vivid



Sample Image Used

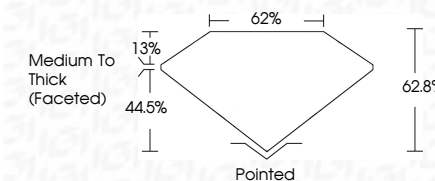


© IGI 2020, International Gemological Institute

FD - 10 20



April 8, 2024	
IGI Report Number	LG627423752
Description	LABORATORY GROWN DIAMOND
Shape and Cutting Style	OVAL MODIFIED BRILLIANT
Measurements	8.41 X 5.80 X 3.64 MM
GRADING RESULTS	
Carat Weight	1.20 CARAT
Color Grade	FANCY INTENSE YELLOW
Clarity Grade	VS 2



ADDITIONAL GRADING INFORMATION

Polish	EXCELLENT
Symmetry	EXCELLENT
Fluorescence	NONE
Inscription(s)	161 LG-627423752

Comments: This Laboratory Grown Diamond was created by Chemical Vapor Deposition (CVD) growth process and may include post-growth treatment.

April 8, 2024	Report No. LG277423762	2.20 CARAT	VS 2	62.5%	62%	Medium to Thick (Faceted)	Pointed	B'CELLANT	B'CELLANT	NONE	1691 LG277423762
	DYAL MODIFIED BRILLIANT	FANCY INTENSE YELLOW									
	Carat Weight	2.20 CARAT									
	Color Grade	FANCY INTENSE YELLOW									
	Clarity Grade	VS 2									
	Depth	62.5%									
	Gable	62%									
	Table	Medium to Thick (Faceted)									
	Culet	Pointed									
	Polish	B'CELLANT									
	Symmetry	B'CELLANT									
	Fluorescence	NONE									
	Inscriptions(s)	1691 LG277423762									

Comments:

The Laboratory Grown Diamond was created using High Pressure High Temperature (HPHT) growth process and may include post-growth treatment.

Comments:
This Laboratory Grown Diamond was created by Chemical Vapor Deposition (CVD) growth process and may include