



ELECTRONIC COPY

LABORATORY GROWN DIAMOND REPORT

| | |
|-------------------------|-----------------------------|
| April 25, 2024 | |
| IGI Report Number | LG632403447 |
| Description | LABORATORY GROWN DIAMOND |
| Shape and Cutting Style | PRINCESS CUT |
| Measurements | 6.24 X 6.16 X 4.54 MM |

GRADING RESULTS

| | |
|---------------|------------|
| Carat Weight | 1.60 CARAT |
| Color Grade | E |
| Clarity Grade | VS 1 |

ADDITIONAL GRADING INFORMATION

| | |
|----------------|---|
| Polish | EXCELLENT |
| Symmetry | EXCELLENT |
| Fluorescence | NONE |
| Inscription(s) |  LG632403447 |

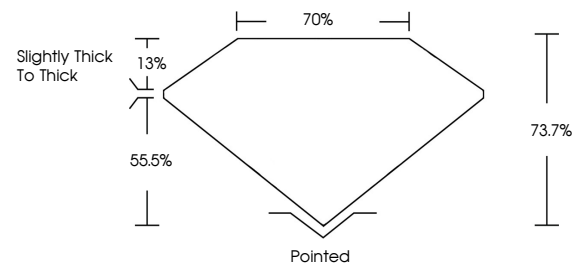
Comments: This Laboratory Grown Diamond was created by Chemical Vapor Deposition (CVD) growth process and may include post-growth treatment.
Type IIa

LABORATORY GROWN DIAMOND REPORT

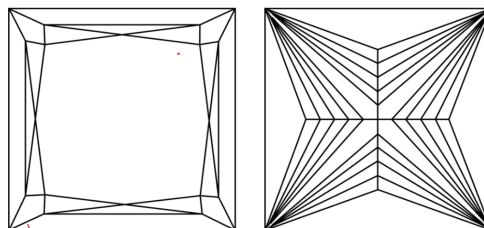
LG632403447

Report verification at igi.org

PROPORTIONS



CLARITY CHARACTERISTICS



KEY TO SYMBOLS

Red symbols indicate internal characteristics.
Green symbols indicate external characteristics.

LABORATORY GROWN
DIAMOND REPORT

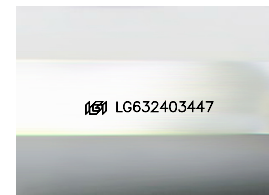
GRADING SCALES

CLARITY

| IF | VVS ¹⁻² | VS ¹⁻² | SI ¹⁻² | I ¹⁻³ |
|------------------------|--------------------------------|---------------------------|----------------------|------------------|
| Internally Flawless | Very Very Slightly Included | Very Slightly Included | Slightly Included | Included |

COLOR

D E F G H I J Faint Very Light Light



Sample Image Used



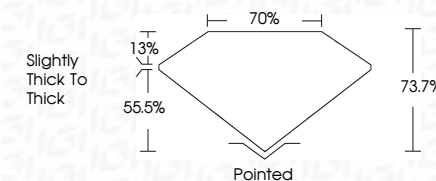
© IGI 2020, International Gemological Institute

FD - 10 20

www.igi.org

LABORATORY GROWN DIAMOND REPORT

| | |
|-------------------------|-----------------------------|
| April 25, 2024 | |
| IGI Report Number | LG632403447 |
| Description | LABORATORY GROWN DIAMOND |
| Shape and Cutting Style | PRINCESS CUT |
| Measurements | 6.24 X 6.16 X 4.54 MM |
| GRADING RESULTS | |
| Carat Weight | 1.60 CARAT |
| Color Grade | E |
| Clarity Grade | VS 1 |



ADDITIONAL GRADING INFORMATION

| | |
|----------------|------------------|
| Polish | EXCELLENT |
| Symmetry | EXCELLENT |
| Fluorescence | NONE |
| Inscription(s) | (15) LG632403447 |

Comments: This Laboratory Grown Diamond was created by Chemical Vapor Deposition (CVD) growth process and may include post-growth treatment.
Type IIa



April 25, 2024
 IGI Report No LG632403447
 PRINCESS CLIT

| | | |
|-----------------------|---------------|-------------------------|
| 3.24 X 6.16 X .454 MM | Carat Weight | 1.60 CARAT |
| | Color Grade | E |
| | Clarity Grade | VS 1 |
| | Depth | 73.7% |
| | Table | 70% |
| | Grade | Slightly Thick To Thick |
| | Quiet | Pointed |
| | Polish | EXCELLENT |
| | Symmetry | EXCELLENT |
| | Fluorescence | NONE |

Comments:
This Laboratory Grown Diamond was created by Chemical Vapor Deposition (CVD) growth process and may include post-growth treatment.