



# INTERNATIONAL GEMOLOGICAL INSTITUTE

## DIAMOND REPORT

**ELECTRONIC COPY**

January 27, 2022  
IGI Report Number 512234001  
Description NATURAL DIAMOND  
Shape and Cutting Style ROUND BRILLIANT  
Measurements 5.51 - 5.59 x 3.55 mm

### GRADING RESULTS

Carat Weight 0.70 CARAT  
Color Grade G  
Clarity Grade VS 2  
Cut Grade VERY GOOD

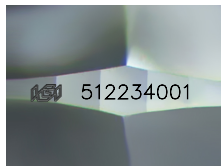
### ADDITIONAL GRADING INFORMATION

Polish EXCELLENT  
Symmetry VERY GOOD  
Fluorescence VERY SLIGHT

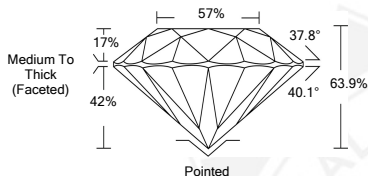
Identification Features CAVITY, CRYSTAL, KNOT  
Inscription(s) IGI 512234001



512234001



Sample Image Used



### COLOR

D - F	G - J	K - M	N - R	S - Z	FANCY
Colorless	Near Colorless	Slightly Tinted	Very Light Color	Light Color	

### CLARITY

IF	VS <sup>1-2</sup>	VS <sup>1-2</sup>	SI <sup>1-2</sup>	I <sup>1-2</sup>
Internally Flawless	Very Very Slightly Included	Very Slightly Included	Slightly Included	Included



January 27, 2022  
IGI Report Number 512234001  
NATURAL DIAMOND  
ROUND BRILLIANT  
5.51 - 5.59 x 3.55 mm  
Carat Weight 0.70 CARAT  
Color Grade G  
Clarity Grade VS 2  
Cut Grade VERY GOOD  
Polish EXCELLENT  
Symmetry VERY GOOD  
Fluorescence VERY SLIGHT  
Inscription(s) IGI 512234001



January 27, 2022  
IGI Report Number 512234001  
NATURAL DIAMOND  
ROUND BRILLIANT  
5.51 - 5.59 x 3.55 mm  
Carat Weight 0.70 CARAT  
Color Grade G  
Clarity Grade VS 2  
Cut Grade VERY GOOD  
Polish EXCELLENT  
Symmetry VERY GOOD  
Fluorescence VERY SLIGHT  
Inscription(s) IGI 512234001

