



INTERNATIONAL GEMOLOGICAL INSTITUTE

DIAMOND REPORT

ELECTRONIC COPY

January 4, 2023
IGI Report Number 523287361
Description NATURAL DIAMOND
Shape and Cutting Style ROUND BRILLIANT
Measurements 5.76 - 5.84 x 3.67 mm

GRADING RESULTS

Carat Weight 0.77 CARAT
Color Grade H
Clarity Grade VS 2
Cut Grade EXCELLENT

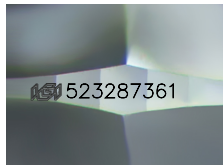
ADDITIONAL GRADING INFORMATION

Polish EXCELLENT
Symmetry EXCELLENT
Fluorescence NONE

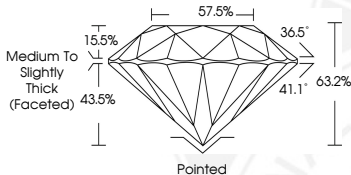
Identification Features CRYSTAL, CLOUD
Inscription(s) IGI 523287361



523287361



Sample Image Used



COLOR

D - F	G - J	K - M	N - R	S - Z	FANCY
Colorless	Near Colorless	Slightly Tinted	Very Light Color	Light Color	

CLARITY

IF	VS ¹⁻²	VS ¹⁻²	SI ¹⁻²	I ¹⁻²
Internally Flawless	Very Very Slightly Included	Very Slightly Included	Slightly Included	Included

© IGI 2020, International Gemological Institute

FD - 10 20



January 4, 2023
IGI Report Number 523287361
NATURAL DIAMOND
ROUND BRILLIANT
5.76 - 5.84 x 3.67 mm
Carat Weight 0.77 CARAT
Color Grade H
Clarity Grade VS 2
Cut Grade EXCELLENT
Polish EXCELLENT
Symmetry EXCELLENT
Fluorescence NONE
Inscription(s) IGI 523287361



January 4, 2023
IGI Report Number 523287361
NATURAL DIAMOND
ROUND BRILLIANT
5.76 - 5.84 x 3.67 mm
Carat Weight 0.77 CARAT
Color Grade H
Clarity Grade VS 2
Cut Grade EXCELLENT
Polish EXCELLENT
Symmetry EXCELLENT
Fluorescence NONE
Inscription(s) IGI 523287361



THIS DOCUMENT WAS PRODUCED WITH THE FOLLOWING SECURITY MEASURES: SPECIAL DOCUMENT PAPER, INK SCREENS, WATERMARK, BACKGROUND DESIGN, HOLOGRAM AND OTHER SECURITY FEATURES NOT LISTED AND DO EXCEED DOCUMENT SECURITY INDUSTRY GUIDELINES.