



# INTERNATIONAL GEMOLOGICAL INSTITUTE

## DIAMOND REPORT

**ELECTRONIC COPY**

August 3, 2022  
IGI Report Number 530222341  
Description NATURAL DIAMOND  
Shape and Cutting Style ROUND BRILLIANT  
Measurements 4.27 - 4.29 x 2.65 mm

### GRADING RESULTS

Carat Weight 0.30 CARAT  
Color Grade F  
Clarity Grade I 1  
Cut Grade EXCELLENT

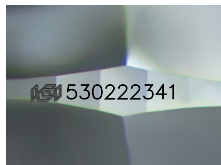
### ADDITIONAL GRADING INFORMATION

Polish EXCELLENT  
Symmetry VERY GOOD  
Fluorescence VERY SLIGHT

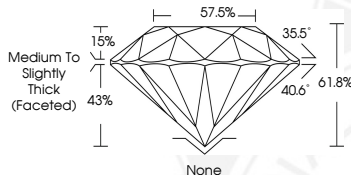
Identification Features FEATHER, CRYSTAL  
Inscription(s) IGI 530222341  
Comments: IDEAL CUT ROUND BRILLIANT



530222341



Sample Image Used



### COLOR

D - F	G - J	K - M	N - R	S - Z	FANCY
Colorless	Near Colorless	Slightly Tinted	Very Light Color	Light Color	

### CLARITY

IF	VS <sup>1-2</sup>	VS <sup>1-2</sup>	SI <sup>1-2</sup>	I <sup>1-2</sup>
Internally Flawless	Very Very Slightly Included	Very Slightly Included	Slightly Included	Included

© IGI 2020, International Gemological Institute

FD - 10 20



August 3, 2022  
IGI Report Number 530222341  
NATURAL DIAMOND  
ROUND BRILLIANT  
4.27 - 4.29 x 2.65 mm  
Carat Weight 0.30 CARAT  
Color Grade F  
Clarity Grade I 1  
Cut Grade EXCELLENT  
Polish EXCELLENT  
Symmetry VERY GOOD  
Fluorescence VERY SLIGHT  
Inscription(s) IGI 530222341  
Comments: IDEAL CUT ROUND BRILLIANT



August 3, 2022  
IGI Report Number 530222341  
NATURAL DIAMOND  
ROUND BRILLIANT  
4.27 - 4.29 x 2.65 mm  
Carat Weight 0.30 CARAT  
Color Grade F  
Clarity Grade I 1  
Cut Grade EXCELLENT  
Polish EXCELLENT  
Symmetry VERY GOOD  
Fluorescence VERY SLIGHT  
Inscription(s) IGI 530222341  
Comments: IDEAL CUT ROUND BRILLIANT



THIS DOCUMENT WAS PRODUCED WITH THE FOLLOWING SECURITY MEASURES: SPECIAL DOCUMENT PAPER, INK SCREENS, WATERMARK, BACKGROUND DESIGN, HOLOGRAM AND OTHER SECURITY FEATURES NOT LISTED AND DO EXCEED DOCUMENT SECURITY INDUSTRY GUIDELINES.