



INTERNATIONAL GEMOLOGICAL INSTITUTE

ELECTRONIC COPY

LABORATORY GROWN DIAMOND REPORT

LG550250860

LABORATORY GROWN DIAMOND REPORT

IGI LABORATORY GROWN DIAMOND IDENTIFICATION REPORT

November 15, 2022

IGI Report Number

LG550250860

Description

LABORATORY GROWN DIAMOND

Shape and Cutting Style

SQUARE CUSHION BRILLIANT

Measurements

5.31 X 5.12 X 3.30 MM

GRADING RESULTS

Carat Weight

0.80 CARAT

Color Grade

FANCY INTENSE PINK

Clarity Grade

VS 1

ADDITIONAL GRADING INFORMATION

Polish

EXCELLENT

Symmetry

VERY GOOD

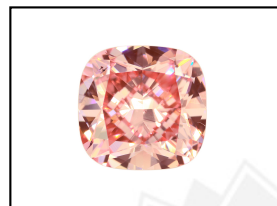
Fluorescence

SLIGHT

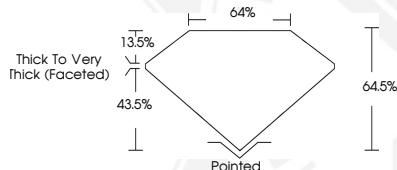
Inscription(s)

LABGROWN (IGI) LG550250860

Comments: This Laboratory Grown Diamond was created by Chemical Vapor Deposition (CVD) growth process. Indications of post-growth treatment.



LASERSCRIBE SM
Sample Images Used



IGI LABORATORY GROWN DIAMOND ID REPORT

November 15, 2022

IGI Report Number **LG550250860**

SQUARE CUSHION BRILLIANT

5.31 X 5.12 X 3.30 MM

Carat Weight 0.80 CARAT

Color Grade FANCY INTENSE PINK

Clarity Grade VS 1

Polish EXCELLENT

Symmetry VERY GOOD

Fluorescence SLIGHT

Inscription(s) LABGROWN (IGI) LG550250860

Comments: This Laboratory Grown Diamond was created by Chemical Vapor Deposition (CVD) growth process. Indications of post-growth treatment.

IGI LABORATORY GROWN DIAMOND ID REPORT

November 15, 2022

IGI Report Number **LG550250860**

SQUARE CUSHION BRILLIANT

5.31 X 5.12 X 3.30 MM

Carat Weight 0.80 CARAT

Color Grade FANCY INTENSE PINK

Clarity Grade VS 1

Polish EXCELLENT

Symmetry VERY GOOD

Fluorescence SLIGHT

Inscription(s) LABGROWN (IGI) LG550250860

Comments: This Laboratory Grown Diamond was created by Chemical Vapor Deposition (CVD) growth process. Indications of post-growth treatment.



THIS DOCUMENT WAS PRODUCED WITH THE FOLLOWING SECURITY MEASURES: SPECIAL DOCUMENT PAPER, INK SCREENS, WATERMARK, BACKGROUND DESIGN, HOLOGRAM AND OTHER SECURITY FEATURES NOT LISTED AND DO EXCEED DOCUMENT SECURITY INDUSTRY GUIDELINES.

For terms & conditions and to verify this report, please visit www.igi.org