



# INTERNATIONAL GEMOLOGICAL INSTITUTE

ELECTRONIC COPY

## LABORATORY GROWN DIAMOND REPORT

LG550250861

### LABORATORY GROWN DIAMOND REPORT

#### IGI LABORATORY GROWN DIAMOND IDENTIFICATION REPORT

October 31, 2022  
IGI Report Number LG550250861  
Description LABORATORY GROWN DIAMOND  
Shape and Cutting Style PEAR BRILLIANT  
Measurements 8.88 X 5.33 X 3.22 MM

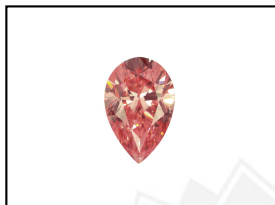
#### GRADING RESULTS

Carat Weight 0.93 CARAT  
Color Grade FANCY INTENSE PINK  
Clarity Grade VS 2

#### ADDITIONAL GRADING INFORMATION

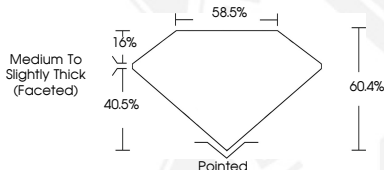
Polish VERY GOOD  
Symmetry VERY GOOD  
Fluorescence SLIGHT  
Inscription(s) LABGROWN (IGI) LG550250861

Comments: This Laboratory Grown Diamond was created by Chemical Vapor Deposition (CVD) growth process. Indications of post-growth treatment.



LABGROWN (IGI) LG550250861

LASERSCRIBE<sup>SM</sup>  
Sample Images Used



#### IGI LABORATORY GROWN DIAMOND ID REPORT

October 31, 2022  
IGI Report Number LG550250861  
PEAR BRILLIANT  
8.88 X 5.33 X 3.22 MM  
Carat Weight 0.93 CARAT  
Color Grade FANCY INTENSE PINK  
Clarity Grade VS 2  
Polish VERY GOOD  
Symmetry VERY GOOD  
Fluorescence SLIGHT  
Inscription(s) LABGROWN (IGI) LG550250861

Comments: This Laboratory Grown Diamond was created by Chemical Vapor Deposition (CVD) growth process. Indications of post-growth treatment.

#### IGI LABORATORY GROWN DIAMOND ID REPORT

October 31, 2022  
IGI Report Number LG550250861  
PEAR BRILLIANT  
8.88 X 5.33 X 3.22 MM  
Carat Weight 0.93 CARAT  
Color Grade FANCY INTENSE PINK  
Clarity Grade VS 2  
Polish VERY GOOD  
Symmetry VERY GOOD  
Fluorescence SLIGHT  
Inscription(s) LABGROWN (IGI) LG550250861

Comments: This Laboratory Grown Diamond was created by Chemical Vapor Deposition (CVD) growth process. Indications of post-growth treatment.



THIS DOCUMENT WAS PRODUCED WITH THE FOLLOWING SECURITY MEASURES: SPECIAL DOCUMENT PAPER, INK SCREENS, WATERMARK, BACKGROUND DESIGN, HOLOGRAM AND OTHER SECURITY FEATURES NOT LISTED AND DO EXCEED DOCUMENT SECURITY INDUSTRY GUIDELINES.

For terms & conditions and to verify this report, please visit [www.igi.org](http://www.igi.org)