

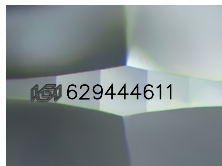


**INTERNATIONAL
GEMOLOGICAL
INSTITUTE**

DIAMOND REPORT

ELECTRONIC COPY

629444611



Sample Image Used



May 8, 2024
IGI Report Number 629444611
NATURAL DIAMOND
ROUND BRILLIANT
5.96 - 6.00 x 3.77 mm
Carat Weight 0.83 CARAT
Color Grade K
Clarity Grade VS 1
Cut Grade EXCELLENT
Polish EXCELLENT
Symmetry EXCELLENT
Fluorescence VERY SLIGHT
Inscription(s) IGI 629444611

May 8, 2024

IGI Report Number 629444611

Description NATURAL DIAMOND

Shape and Cutting Style ROUND BRILLIANT

Measurements 5.96 - 6.00 x 3.77 mm

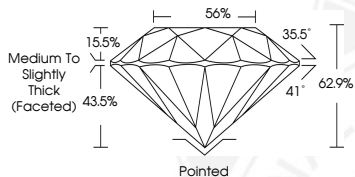
GRADING RESULTS

Carat Weight 0.83 CARAT

Color Grade K

Clarity Grade VS 1

Cut Grade EXCELLENT



ADDITIONAL GRADING INFORMATION

Polish EXCELLENT

Symmetry EXCELLENT

Fluorescence VERY SLIGHT

Identification Features FEATHER

Inscription(s) IGI 629444611

COLOR

D - F	G - J	K - M	N - R	S - Z	FANCY
Colorless	Near Colorless	Slightly Tinted	Very Light Color	Light Color	

CLARITY

IF	VS ¹⁻²	VS ¹⁻²	SI ¹⁻²	I ¹⁻²
Internally Flawless	Very Very Slightly Included	Very Slightly Included	Slightly Included	Included

© IGI 2020, International Gemological Institute

FD - 10 20



May 8, 2024
IGI Report Number 629444611
NATURAL DIAMOND
ROUND BRILLIANT
5.96 - 6.00 x 3.77 mm
Carat Weight 0.83 CARAT
Color Grade K
Clarity Grade VS 1
Cut Grade EXCELLENT
Polish EXCELLENT
Symmetry EXCELLENT
Fluorescence VERY SLIGHT
Inscription(s) IGI 629444611

THIS DOCUMENT WAS PRODUCED WITH THE FOLLOWING SECURITY MEASURES: SPECIAL DOCUMENT PAPER, INK SCREENS, WATERMARK BACKGROUND DESIGNS, HOLOGRAM AND OTHER SECURITY FEATURES NOT LISTED AND DO EXCEED DOCUMENT SECURITY INDUSTRY GUIDELINES.