



# INTERNATIONAL GEMOLOGICAL INSTITUTE

ELECTRONIC COPY

LG646459184

## LABORATORY GROWN DIAMOND REPORT

August 6, 2024  
IGI Report Number **LG646459184**  
Description **LABORATORY GROWN DIAMOND**  
Shape and Cutting Style **ROUND MODIFIED BRILLIANT**  
Measurements **6.10 - 6.12 X 3.94 MM**

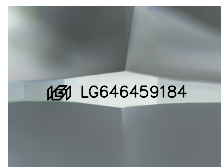
### GRADING RESULTS

Carat Weight **0.94 CARAT**  
Color Grade **E**  
Clarity Grade **VVS 2**

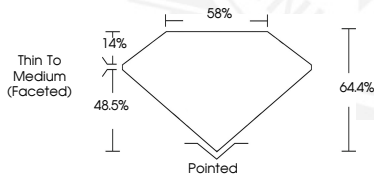
### ADDITIONAL GRADING INFORMATION

Polish **EXCELLENT**  
Symmetry **EXCELLENT**  
Fluorescence **NONE**  
Inscription(s) **IGI LG646459184**

Comments: As Grown - No indication of post-growth treatment.  
This Laboratory Grown Diamond was created by High Pressure High Temperature (HPHT) growth process.  
Type II



Sample Image Used



August 6, 2024  
IGI Report Number **LG646459184**  
ROUND MODIFIED BRILLIANT  
LABORATORY GROWN DIAMOND  
6.10 - 6.12 X 3.94 MM  
Carat Weight **0.94 CARAT**  
Color Grade **E**  
Clarity Grade **VVS 2**  
Polish **EXCELLENT**  
Symmetry **EXCELLENT**  
Fluorescence **NONE**  
Inscription(s) **IGI LG646459184**  
Comments: As Grown - No indication of post-growth treatment. This Laboratory Grown Diamond was created by High Pressure High Temperature (HPHT) growth process. Type II



August 6, 2024  
IGI Report Number **LG646459184**  
ROUND MODIFIED BRILLIANT  
LABORATORY GROWN DIAMOND  
6.10 - 6.12 X 3.94 MM  
Carat Weight **0.94 CARAT**  
Color Grade **E**  
Clarity Grade **VVS 2**  
Polish **EXCELLENT**  
Symmetry **EXCELLENT**  
Fluorescence **NONE**  
Inscription(s) **IGI LG646459184**  
Comments: As Grown - No indication of post-growth treatment. This Laboratory Grown Diamond was created by High Pressure High Temperature (HPHT) growth process. Type II



THIS DOCUMENT WAS PRODUCED WITH THE FOLLOWING SECURITY MEASURES: SPECIAL DOCUMENT PAPER, INK SCREENS, WATERMARK, BACKGROUND DESIGNS, HOLOGRAM AND OTHER SECURITY FEATURES NOT LISTED AND DO EXCEED DOCUMENT SECURITY INDUSTRY GUIDELINES.

For terms & conditions and to verify this report, please visit [www.igi.org](http://www.igi.org)