



# INTERNATIONAL GEMOLOGICAL INSTITUTE

ELECTRONIC COPY

## LABORATORY GROWN DIAMOND REPORT

LG647405549


### IGI LABORATORY GROWN DIAMOND ID REPORT

November 20, 2024

IGI Report Number **LG647405549**

#### ROUND BRILLIANT

**6.28 - 6.31 X 3.96 MM**

Carat Weight	0.96 CARAT
Color Grade	H
Clarity Grade	VS 2
Cut Grade	EXCELLENT
Polish	EXCELLENT
Symmetry	EXCELLENT
Fluorescence	NONE
Inscription(s)	 LG647405549

## LABORATORY GROWN DIAMOND REPORT

### IGI LABORATORY GROWN DIAMOND IDENTIFICATION REPORT

November 20, 2024

IGI Report Number

LG647405549

Description

LABORATORY GROWN DIAMOND

Shape and Cutting Style

ROUND BRILLIANT

Measurements

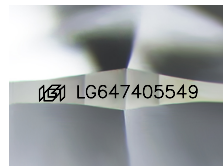
6.28 - 6.31 X 3.96 MM

### GRADING RESULTS

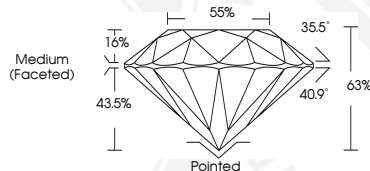
Carat Weight	0.96 CARAT
Color Grade	H
Clarity Grade	VS 2
Cut Grade	EXCELLENT

### ADDITIONAL GRADING INFORMATION

Polish	EXCELLENT
Symmetry	EXCELLENT
Fluorescence	NONE
Inscription(s)	 LG647405549



Sample Image Used




### IGI LABORATORY GROWN DIAMOND ID REPORT

November 20, 2024

IGI Report Number **LG647405549**

#### ROUND BRILLIANT

**6.28 - 6.31 X 3.96 MM**

Carat Weight	0.96 CARAT
Color Grade	H
Clarity Grade	VS 2
Cut Grade	EXCELLENT
Polish	EXCELLENT
Symmetry	EXCELLENT
Fluorescence	NONE
Inscription(s)	 LG647405549



THIS DOCUMENT WAS PRODUCED WITH THE FOLLOWING SECURITY MEASURES: SPECIAL DOCUMENT PAPER, INK SCREENS, WATERMARK, BACKGROUND DESIGN, HOLOGRAM AND OTHER SECURITY FEATURES NOT LISTED AND DO EXCEED DOCUMENT SECURITY INDUSTRY GUIDELINES.

For terms & conditions and to verify this report, please visit [www.igi.org](http://www.igi.org)