



# INTERNATIONAL GEMOLOGICAL INSTITUTE

ELECTRONIC COPY

LG653417739



September 20, 2024

IGI Report Number LG653417739  
ROUND BRILLIANT  
LABORATORY GROWN DIAMOND  
4.88 - 4.91 X 2.94 MM

Carat Weight 0.44 CARAT  
Color Grade D  
Clarity Grade VVS 2  
Cut Grade IDEAL  
Polish EXCELLENT  
Symmetry EXCELLENT  
Fluorescence NONE  
Inscription(s) IGI LG653417739

Comments: HEARTS & ARROWS This Laboratory Grown Diamond was created by Chemical Vapor Deposition (CVD) growth process. Type IIa

## LABORATORY GROWN DIAMOND REPORT

September 20, 2024

IGI Report Number

LG653417739

Description

LABORATORY GROWN DIAMOND

Shape and Cutting Style

ROUND BRILLIANT

Measurements

4.88 - 4.91 X 2.94 MM

### GRADING RESULTS

Carat Weight

0.44 CARAT

Color Grade

D

Clarity Grade

VVS 2

Cut Grade

IDEAL

### ADDITIONAL GRADING INFORMATION

Polish

EXCELLENT

Symmetry

EXCELLENT

Fluorescence

NONE

Inscription(s)

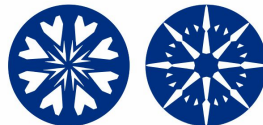
IGI LG653417739

Comments: HEARTS & ARROWS

This Laboratory Grown Diamond was created by Chemical Vapor

Deposition (CVD) growth process.

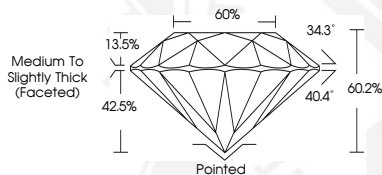
Type IIa



HEARTS & ARROWS



Sample Image Used



September 20, 2024

IGI Report Number LG653417739  
ROUND BRILLIANT  
LABORATORY GROWN DIAMOND  
4.88 - 4.91 X 2.94 MM

Carat Weight 0.44 CARAT  
Color Grade D  
Clarity Grade VVS 2  
Cut Grade IDEAL  
Polish EXCELLENT  
Symmetry EXCELLENT  
Fluorescence NONE  
Inscription(s) IGI LG653417739

Comments: HEARTS & ARROWS This Laboratory Grown Diamond was created by Chemical Vapor Deposition (CVD) growth process. Type IIa



THIS DOCUMENT WAS PRODUCED WITH THE FOLLOWING SECURITY MEASURES: SPECIAL DOCUMENT PAPER, INK SCREENS, WATERMARK, BACKGROUND DESIGNS, HOLOGRAM AND OTHER SECURITY FEATURES NOT LISTED AND DO EXCEED DOCUMENT SECURITY INDUSTRY GUIDELINES.

For terms & conditions and to verify this report, please visit [www.igi.org](http://www.igi.org)