



# INTERNATIONAL GEMOLOGICAL INSTITUTE

ELECTRONIC COPY

LG665456490



November 19, 2024

IGI Report Number LG665456490

ROUND BRILLIANT

LABORATORY GROWN DIAMOND

5.21 - 5.22 X 3.13 MM

Carat Weight 0.52 CARAT

Color Grade E

Clarity Grade VVS 2

Cut Grade EXCELLENT

Polish VERY GOOD

Symmetry VERY GOOD

Fluorescence NONE

Inscription(s) IGI LG665456490

Comments: This Laboratory Grown Diamond was created by Chemical Vapor Deposition (CVD) growth process. Type IIa

## LABORATORY GROWN DIAMOND REPORT

November 19, 2024

IGI Report Number

LG665456490

Description

LABORATORY GROWN DIAMOND

Shape and Cutting Style

ROUND BRILLIANT

Measurements

5.21 - 5.22 X 3.13 MM

### GRADING RESULTS

Carat Weight 0.52 CARAT

Color Grade E

Clarity Grade VVS 2

Cut Grade EXCELLENT

### ADDITIONAL GRADING INFORMATION

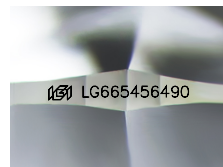
Polish VERY GOOD

Symmetry VERY GOOD

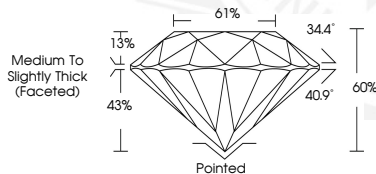
Fluorescence NONE

Inscription(s) IGI LG665456490

Comments: This Laboratory Grown Diamond was created by Chemical Vapor Deposition (CVD) growth process. Type IIa



Sample Image Used



November 19, 2024

IGI Report Number LG665456490

ROUND BRILLIANT

LABORATORY GROWN DIAMOND

5.21 - 5.22 X 3.13 MM

Carat Weight 0.52 CARAT

Color Grade E

Clarity Grade VVS 2

Cut Grade EXCELLENT

Polish VERY GOOD

Symmetry VERY GOOD

Fluorescence NONE

Inscription(s) IGI LG665456490

Comments: This Laboratory Grown Diamond was created by Chemical Vapor Deposition (CVD) growth process. Type IIa



THIS DOCUMENT WAS PRODUCED WITH THE FOLLOWING SECURITY MEASURES: SPECIAL DOCUMENT PAPER, INK SCREENS, WATERMARK, BACKGROUND DESIGNS, HOLOGRAM AND OTHER SECURITY FEATURES NOT LISTED AND DO EXCEED DOCUMENT SECURITY INDUSTRY GUIDELINES.

For terms & conditions and to verify this report, please visit [www.igi.org](http://www.igi.org)