



**INTERNATIONAL  
GEMOLOGICAL  
INSTITUTE**

**DIAMOND REPORT**

December 26, 2024  
 IGI Report Number **670416595**  
 Description **NATURAL DIAMOND**  
 Shape and Cutting Style **ROUND BRILLIANT**  
 Measurements **5.37 - 5.38 X 3.40 MM**

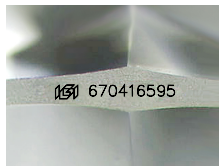
**GRADING RESULTS**

Carat Weight **0.61 CARAT**  
 Color Grade **S-T**  
 Clarity Grade **VS 2**  
 Cut Grade **EXCELLENT**

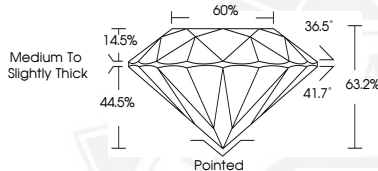
**ADDITIONAL GRADING INFORMATION**

Polish **EXCELLENT**  
 Symmetry **EXCELLENT**  
 Fluorescence **STRONG**  
 Identification Features **FEATHER, CRYSTAL CLOUD**  
 Inscription(s) **IGI 670416595**

**ELECTRONIC COPY**



Sample Image Used



December 26, 2024  
 IGI Report Number **670416595**  
 ROUND BRILLIANT  
 NATURAL DIAMOND  
 5.37 - 5.38 X 3.40 MM  
 Carat Weight **0.61 CARAT**  
 Color Grade **S-T**  
 Clarity Grade **VS 2**  
 Cut Grade **EXCELLENT**  
 Polish **EXCELLENT**  
 Symmetry **EXCELLENT**  
 Fluorescence **STRONG**  
 Inscription(s) **IGI 670416595**



December 26, 2024  
 IGI Report Number **670416595**  
 ROUND BRILLIANT  
 NATURAL DIAMOND  
 5.37 - 5.38 X 3.40 MM  
 Carat Weight **0.61 CARAT**  
 Color Grade **S-T**  
 Clarity Grade **VS 2**  
 Cut Grade **EXCELLENT**  
 Polish **EXCELLENT**  
 Symmetry **EXCELLENT**  
 Fluorescence **STRONG**  
 Inscription(s) **IGI 670416595**



THIS DOCUMENT WAS PRODUCED WITH THE FOLLOWING SECURITY MEASURES: SPECIAL DOCUMENT PAPER, INK SCREENS, WATERMARK, BACKGROUND DESIGN, HOLOGRAM AND OTHER SECURITY FEATURES NOT LISTED AND DO EXCEED DOCUMENT SECURITY INDUSTRY GUIDELINES.

For terms & conditions and to verify this report, please visit [www.igi.org](http://www.igi.org)