



INTERNATIONAL GEMOLOGICAL INSTITUTE

ELECTRONIC COPY

LG670441180



December 24, 2024

IGI Report Number LG670441180
ROUND BRILLIANT
LABORATORY GROWN DIAMOND
5.41 - 5.44 X 3.27 MM

Carat Weight 0.57 CARAT
Color Grade D
Clarity Grade VVS 2
Cut Grade VERY GOOD
Polish GOOD
Symmetry GOOD
Fluorescence NONE
Inscription(s) IGI LG670441180

Comments: This Laboratory Grown Diamond was created by Chemical Vapor Deposition (CVD) growth process. Type IIa

LABORATORY GROWN DIAMOND REPORT

December 24, 2024

IGI Report Number LG670441180

Description LABORATORY GROWN DIAMOND

Shape and Cutting Style ROUND BRILLIANT

Measurements 5.41 - 5.44 X 3.27 MM

GRADING RESULTS

Carat Weight 0.57 CARAT

Color Grade D

Clarity Grade VVS 2

Cut Grade VERY GOOD

ADDITIONAL GRADING INFORMATION

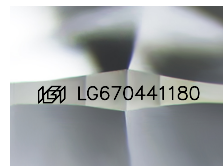
Polish GOOD

Symmetry GOOD

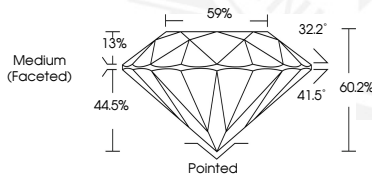
Fluorescence NONE

Inscription(s) IGI LG670441180

Comments: This Laboratory Grown Diamond was created by Chemical Vapor Deposition (CVD) growth process. Type IIa



Sample Image Used



December 24, 2024

IGI Report Number LG670441180
ROUND BRILLIANT
LABORATORY GROWN DIAMOND
5.41 - 5.44 X 3.27 MM

Carat Weight 0.57 CARAT
Color Grade D
Clarity Grade VVS 2
Cut Grade VERY GOOD
Polish GOOD
Symmetry GOOD
Fluorescence NONE
Inscription(s) IGI LG670441180

Comments: This Laboratory Grown Diamond was created by Chemical Vapor Deposition (CVD) growth process. Type IIa



THIS DOCUMENT WAS PRODUCED WITH THE FOLLOWING SECURITY MEASURES: SPECIAL DOCUMENT PAPER, INK SCREENS, WATERMARK, BACKGROUND DESIGNS, HOLOGRAM AND OTHER SECURITY FEATURES NOT LISTED AND DO EXCEED DOCUMENT SECURITY INDUSTRY GUIDELINES.

For terms & conditions and to verify this report, please visit www.igi.org