



# INTERNATIONAL GEMOLOGICAL INSTITUTE

ELECTRONIC COPY



February 26, 2025

IGI Report Number 678561024

ROUND BRILLIANT

NATURAL DIAMOND

5.77 - 5.79 X 3.46 MM

Carat Weight 0.70 CARAT

Color Grade F

Clarity Grade SI 2

Cut Grade EXCELLENT

Polish EXCELLENT

Symmetry EXCELLENT

Fluorescence SLIGHT

Inscription(s) IGI 678561024

Comments: IDEAL CUT ROUND

BRILLIANT

## DIAMOND REPORT

February 26, 2025

IGI Report Number

678561024

Description

NATURAL DIAMOND

Shape and Cutting Style

ROUND BRILLIANT

Measurements

5.77 - 5.79 X 3.46 MM

## GRADING RESULTS

Carat Weight

0.70 CARAT

Color Grade

F

Clarity Grade

SI 2

Cut Grade

EXCELLENT

## ADDITIONAL GRADING INFORMATION

Polish

EXCELLENT

Symmetry

EXCELLENT

Fluorescence

SLIGHT

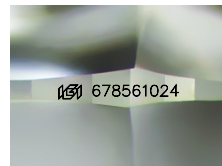
Identification Features

CLOUD, CRYSTAL, FEATHER

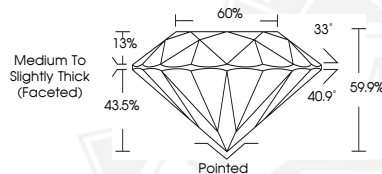
Inscription(s)

IGI 678561024

Comments: IDEAL CUT ROUND BRILLIANT



Sample Image Used



February 26, 2025

IGI Report Number 678561024

ROUND BRILLIANT

NATURAL DIAMOND

5.77 - 5.79 X 3.46 MM

Carat Weight 0.70 CARAT

Color Grade F

Clarity Grade SI 2

Cut Grade EXCELLENT

Polish EXCELLENT

Symmetry EXCELLENT

Fluorescence SLIGHT

Inscription(s) IGI 678561024

Comments: IDEAL CUT ROUND

BRILLIANT



THIS DOCUMENT WAS PRODUCED WITH THE FOLLOWING SECURITY MEASURES: SPECIAL DOCUMENT PAPER, INK SCREENS, WATERMARK, BACKGROUND DESIGNS, HOLOGRAM AND OTHER SECURITY FEATURES NOT LISTED AND DO EXCEED DOCUMENT SECURITY INDUSTRY GUIDELINES.

For terms & conditions and to verify this report, please visit [www.igi.org](http://www.igi.org)