



# INTERNATIONAL GEMOLOGICAL INSTITUTE

## DIAMOND REPORT

May 8, 2025  
IGI Report Number **679508844**  
Description **NATURAL DIAMOND**  
Shape and Cutting Style **ROUND BRILLIANT**  
Measurements **4.36 - 4.40 X 2.72 MM**

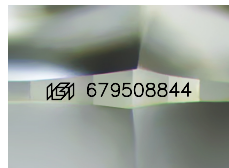
### GRADING RESULTS

Carat Weight **0.32 CARAT**  
Color Grade **G**  
Clarity Grade **VS 1**  
Cut Grade **EXCELLENT**

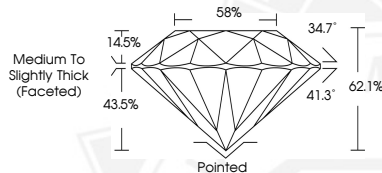
### ADDITIONAL GRADING INFORMATION

Polish **EXCELLENT**  
Symmetry **EXCELLENT**  
Fluorescence **VERY SLIGHT**  
Identification Features **CRYSTAL, CLOUD**  
Inscription(s) **IGI 679508844**  
Comments: IDEAL CUT ROUND BRILLIANT

ELECTRONIC COPY



Sample Image Used



May 8, 2025

IGI Report Number **679508844**

ROUND BRILLIANT

NATURAL DIAMOND

4.36 - 4.40 X 2.72 MM

Carat Weight **0.32 CARAT**

Color Grade **G**

Clarity Grade **VS 1**

Cut Grade **EXCELLENT**

Polish **EXCELLENT**

Symmetry **EXCELLENT**

Fluorescence **VERY SLIGHT**

Inscription(s) **IGI 679508844**

Comments: IDEAL CUT ROUND

BRILLIANT



May 8, 2025

IGI Report Number **679508844**

ROUND BRILLIANT

NATURAL DIAMOND

4.36 - 4.40 X 2.72 MM

Carat Weight **0.32 CARAT**

Color Grade **G**

Clarity Grade **VS 1**

Cut Grade **EXCELLENT**

Polish **EXCELLENT**

Symmetry **EXCELLENT**

Fluorescence **VERY SLIGHT**

Inscription(s) **IGI 679508844**

Comments: IDEAL CUT ROUND

BRILLIANT



THIS DOCUMENT WAS PRODUCED WITH THE FOLLOWING SECURITY MEASURES: SPECIAL DOCUMENT PAPER, INK SCREENS, WATERMARK, BACKGROUND DESIGNS, HOLOGRAM AND OTHER SECURITY FEATURES NOT LISTED AND DO EXCEED DOCUMENT SECURITY INDUSTRY GUIDELINES.

For terms & conditions and to verify this report, please visit [www.igi.org](http://www.igi.org)