



# INTERNATIONAL GEMOLOGICAL INSTITUTE

## DIAMOND REPORT

May 8, 2025  
IGI Report Number **679508846**  
Description **NATURAL DIAMOND**  
Shape and Cutting Style **ROUND BRILLIANT**  
Measurements **4.50 - 4.53 X 2.81 MM**

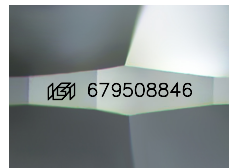
### GRADING RESULTS

Carat Weight **0.35 CARAT**  
Color Grade **F**  
Clarity Grade **VS 2**  
Cut Grade **EXCELLENT**

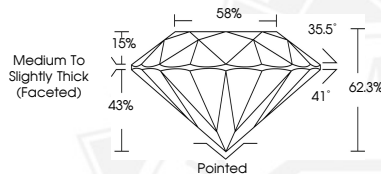
### ADDITIONAL GRADING INFORMATION

Polish **EXCELLENT**  
Symmetry **EXCELLENT**  
Fluorescence **SLIGHT**  
Identification Features **CRYSTAL, CLOUD**  
Inscription(s) **IGI 679508846**  
Comments: IDEAL CUT ROUND BRILLIANT

ELECTRONIC COPY



Sample Image Used



May 8, 2025

IGI Report Number **679508846**  
**ROUND BRILLIANT**  
**NATURAL DIAMOND**  
**4.50 - 4.53 X 2.81 MM**  
Carat Weight **0.35 CARAT**  
Color Grade **F**  
Clarity Grade **VS 2**  
Cut Grade **EXCELLENT**  
Polish **EXCELLENT**  
Symmetry **EXCELLENT**  
Fluorescence **SLIGHT**  
Inscription(s) **IGI 679508846**  
Comments: IDEAL CUT ROUND  
BRILLIANT



May 8, 2025

IGI Report Number **679508846**  
**ROUND BRILLIANT**  
**NATURAL DIAMOND**  
**4.50 - 4.53 X 2.81 MM**  
Carat Weight **0.35 CARAT**  
Color Grade **F**  
Clarity Grade **VS 2**  
Cut Grade **EXCELLENT**  
Polish **EXCELLENT**  
Symmetry **EXCELLENT**  
Fluorescence **SLIGHT**  
Inscription(s) **IGI 679508846**  
Comments: IDEAL CUT ROUND  
BRILLIANT



THIS DOCUMENT WAS PRODUCED WITH THE FOLLOWING SECURITY MEASURES: SPECIAL DOCUMENT PAPER, INK SCREENS, WATERMARK, BACKGROUND DESIGNS, HOLOGRAM AND OTHER SECURITY FEATURES NOT LISTED AND DO EXCEED DOCUMENT SECURITY INDUSTRY GUIDELINES.

For terms & conditions and to verify this report, please visit [www.igi.org](http://www.igi.org)