



# INTERNATIONAL GEMOLOGICAL INSTITUTE

ELECTRONIC COPY

## LABORATORY GROWN DIAMOND REPORT

February 11, 2025  
IGI Report Number **LG680507373**  
Description **LABORATORY GROWN DIAMOND**  
Shape and Cutting Style **EMERALD CUT**  
Measurements **5.18 X 3.78 X 2.74 MM**

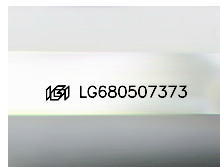
### GRADING RESULTS

Carat Weight **0.53 CARAT**  
Color Grade **FANCY VIVID YELLOW**  
Clarity Grade **VS 1**

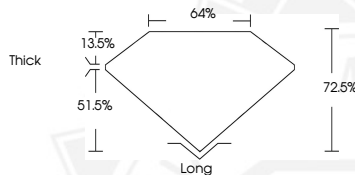
### ADDITIONAL GRADING INFORMATION

Polish **VERY GOOD**  
Symmetry **VERY GOOD**  
Fluorescence **NONE**  
Inscription(s) **IGI LG680507373**

Comments: As Grown - No indication of post-growth treatment. This Laboratory Grown Diamond was created by High Pressure High Temperature (HPHT) growth process.



Sample Image Used



February 11, 2025  
IGI Report Number **LG680507373**  
EMERALD CUT  
LABORATORY GROWN DIAMOND  
5.18 X 3.78 X 2.74 MM  
Carat Weight **0.53 CARAT**  
Color Grade **FANCY VIVID YELLOW**  
Clarity Grade **VS 1**  
Polish **VERY GOOD**  
Symmetry **VERY GOOD**  
Fluorescence **NONE**  
Inscription(s) **IGI LG680507373**  
Comments: As Grown - No indication of post-growth treatment. This Laboratory Grown Diamond was created by High Pressure High Temperature (HPHT) growth process.



February 11, 2025  
IGI Report Number **LG680507373**  
EMERALD CUT  
LABORATORY GROWN DIAMOND  
5.18 X 3.78 X 2.74 MM  
Carat Weight **0.53 CARAT**  
Color Grade **FANCY VIVID YELLOW**  
Clarity Grade **VS 1**  
Polish **VERY GOOD**  
Symmetry **VERY GOOD**  
Fluorescence **NONE**  
Inscription(s) **IGI LG680507373**  
Comments: As Grown - No indication of post-growth treatment. This Laboratory Grown Diamond was created by High Pressure High Temperature (HPHT) growth process.



THIS DOCUMENT WAS PRODUCED WITH THE FOLLOWING SECURITY MEASURES: SPECIAL DOCUMENT PAPER, INK SCREENS, WATERMARK, BACKGROUND DESIGNS, HOLOGRAM AND OTHER SECURITY FEATURES NOT LISTED AND DO EXCEED DOCUMENT SECURITY INDUSTRY GUIDELINES.

For terms & conditions and to verify this report, please visit [www.igi.org](http://www.igi.org)