



# INTERNATIONAL GEMOLOGICAL INSTITUTE

ELECTRONIC COPY

## DIAMOND REPORT

February 27, 2025

IGI Report Number

681539847

Description

NATURAL DIAMOND

Shape and Cutting Style

ROUND BRILLIANT

Measurements

5.14 - 5.15 X 3.22 MM

## GRADING RESULTS

Carat Weight

0.52 CARAT

Color Grade

K

Clarity Grade

VS 2

Cut Grade

EXCELLENT

## ADDITIONAL GRADING INFORMATION

Polish

EXCELLENT

Symmetry

EXCELLENT

Fluorescence

VERY SLIGHT

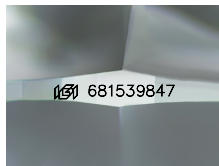
Identification Features

CRYSTAL, FEATHER, CLOUD

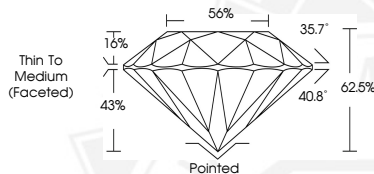
Inscription(s)

IGI 681539847

Comments: IDEAL CUT ROUND BRILLIANT



Sample Image Used



February 27, 2025

IGI Report Number 681539847

ROUND BRILLIANT

NATURAL DIAMOND

5.14 - 5.15 X 3.22 MM

Carat Weight 0.52 CARAT

Color Grade K

Clarity Grade VS 2

Cut Grade EXCELLENT

Polish EXCELLENT

Symmetry EXCELLENT

Fluorescence VERY SLIGHT

Inscription(s) IGI 681539847

Comments: IDEAL CUT ROUND

BRILLIANT



February 27, 2025

IGI Report Number 681539847

ROUND BRILLIANT

NATURAL DIAMOND

5.14 - 5.15 X 3.22 MM

Carat Weight 0.52 CARAT

Color Grade K

Clarity Grade VS 2

Cut Grade EXCELLENT

Polish EXCELLENT

Symmetry EXCELLENT

Fluorescence VERY SLIGHT

Inscription(s) IGI 681539847

Comments: IDEAL CUT ROUND

BRILLIANT



THIS DOCUMENT WAS PRODUCED WITH THE FOLLOWING SECURITY MEASURES: SPECIAL DOCUMENT PAPER, INK SCREENS, WATERMARK, BACKGROUND DESIGNS, HOLOGRAM AND OTHER SECURITY FEATURES NOT LISTED AND DO EXCEED DOCUMENT SECURITY INDUSTRY GUIDELINES.

For terms & conditions and to verify this report, please visit [www.igi.org](http://www.igi.org)