



# INTERNATIONAL GEMOLOGICAL INSTITUTE

## DIAMOND REPORT

July 8, 2025  
IGI Report Number **683576490**  
Description **NATURAL DIAMOND**  
Shape and Cutting Style **ROUND BRILLIANT**  
Measurements **5.90 - 5.92 X 3.74 MM**

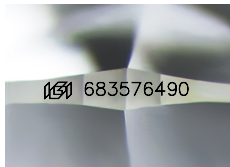
### GRADING RESULTS

Carat Weight **0.80 CARAT**  
Color Grade **G**  
Clarity Grade **VVS 2**  
Cut Grade **EXCELLENT**

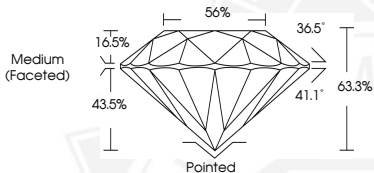
### ADDITIONAL GRADING INFORMATION

Polish **EXCELLENT**  
Symmetry **EXCELLENT**  
Fluorescence **NONE**  
Identification Features **CLOUD, NEEDLE, PINPOINT**  
Inscription(s) **IGI 683576490**

ELECTRONIC COPY



Sample Image Used



THIS DOCUMENT WAS PRODUCED WITH THE FOLLOWING SECURITY MEASURES: SPECIAL DOCUMENT PAPER, INK SCREENS, WATERMARK, BACKGROUND DESIGNS, HOLOGRAM AND OTHER SECURITY FEATURES NOT LISTED AND DO EXCEED DOCUMENT SECURITY INDUSTRY GUIDELINES.

For terms & conditions and to verify this report, please visit [www.igi.org](http://www.igi.org)



July 8, 2025

IGI Report Number **683576490**

**ROUND BRILLIANT**  
**NATURAL DIAMOND**  
**5.90 - 5.92 X 3.74 MM**  
Carat Weight **0.80 CARAT**  
Color Grade **G**  
Clarity Grade **VVS 2**  
Cut Grade **EXCELLENT**  
Polish **EXCELLENT**  
Symmetry **EXCELLENT**  
Fluorescence **NONE**  
Inscription(s) **IGI 683576490**



July 8, 2025

IGI Report Number **683576490**

**ROUND BRILLIANT**  
**NATURAL DIAMOND**  
**5.90 - 5.92 X 3.74 MM**  
Carat Weight **0.80 CARAT**  
Color Grade **G**  
Clarity Grade **VVS 2**  
Cut Grade **EXCELLENT**  
Polish **EXCELLENT**  
Symmetry **EXCELLENT**  
Fluorescence **NONE**  
Inscription(s) **IGI 683576490**