



# INTERNATIONAL GEMOLOGICAL INSTITUTE

## DIAMOND REPORT

March 27, 2025  
IGI Report Number **687515541**  
Description **NATURAL DIAMOND**  
Shape and Cutting Style **ROUND BRILLIANT**  
Measurements **5.64 - 5.65 X 3.54 MM**

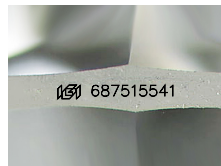
## GRADING RESULTS

Carat Weight **0.69 CARAT**  
Color Grade **E**  
Clarity Grade **SI 2**  
Cut Grade **EXCELLENT**

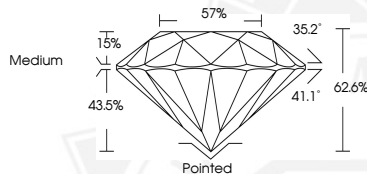
## ADDITIONAL GRADING INFORMATION

Polish **EXCELLENT**  
Symmetry **EXCELLENT**  
Fluorescence **VERY SLIGHT**  
Identification Features **CRYSTAL, FEATHER, CLOUD**  
Inscription(s) **(IGI) 687515541**

ELECTRONIC COPY



Sample Image Used



March 27, 2025  
IGI Report Number **687515541**  
ROUND BRILLIANT  
NATURAL DIAMOND  
5.64 - 5.65 X 3.54 MM  
Carat Weight **0.69 CARAT**  
Color Grade **E**  
Clarity Grade **SI 2**  
Cut Grade **EXCELLENT**  
Polish **EXCELLENT**  
Symmetry **EXCELLENT**  
Fluorescence **VERY SLIGHT**  
Inscription(s) **(IGI) 687515541**



March 27, 2025  
IGI Report Number **687515541**  
ROUND BRILLIANT  
NATURAL DIAMOND  
5.64 - 5.65 X 3.54 MM  
Carat Weight **0.69 CARAT**  
Color Grade **E**  
Clarity Grade **SI 2**  
Cut Grade **EXCELLENT**  
Polish **EXCELLENT**  
Symmetry **EXCELLENT**  
Fluorescence **VERY SLIGHT**  
Inscription(s) **(IGI) 687515541**



THIS DOCUMENT WAS PRODUCED WITH THE FOLLOWING SECURITY MEASURES: SPECIAL DOCUMENT PAPER, INK SCREENS, WATERMARK, BACKGROUND DESIGN, HOLOGRAM AND OTHER SECURITY FEATURES NOT LISTED AND DO EXCEED DOCUMENT SECURITY INDUSTRY GUIDELINES.

For terms & conditions and to verify this report, please visit [www.igi.org](http://www.igi.org)