



INTERNATIONAL GEMOLOGICAL INSTITUTE

LABORATORY GROWN DIAMOND REPORT

March 13, 2025
IGI Report Number **LG689535249**
Description **LABORATORY GROWN DIAMOND**
Shape and Cutting Style **CUSHION BRILLIANT**
Measurements **5.57 X 5.19 X 3.65 MM**

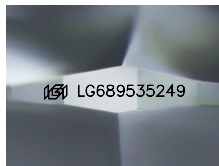
GRADING RESULTS

Carat Weight **0.86 CARAT**
Color Grade **E**
Clarity Grade **SI 1**

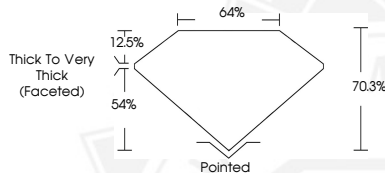
ADDITIONAL GRADING INFORMATION

Polish **EXCELLENT**
Symmetry **EXCELLENT**
Fluorescence **NONE**
Inscription(s) **IGI LG689535249**

Comments: As Grown - No indication of post-growth treatment. This Laboratory Grown Diamond was created by High Pressure High Temperature (HPHT) growth process. Type II



Sample Image Used



THIS DOCUMENT WAS PRODUCED WITH THE FOLLOWING SECURITY MEASURES: SPECIAL DOCUMENT PAPER, INK SCREENS, WATERMARK, BACKGROUND DESIGN, HOLOGRAM AND OTHER SECURITY FEATURES NOT LISTED AND DO EXCEED DOCUMENT SECURITY INDUSTRY GUIDELINES.

For terms & conditions and to verify this report, please visit www.igi.org



March 13, 2025
IGI Report Number **LG689535249**
CUSHION BRILLIANT
LABORATORY GROWN DIAMOND
5.57 X 5.19 X 3.65 MM
Carat Weight **0.86 CARAT**
Color Grade **E**
Clarity Grade **SI 1**
Polish **EXCELLENT**
Symmetry **EXCELLENT**
Fluorescence **NONE**
Inscription(s) **IGI LG689535249**

Comments: As Grown - No indication of post-growth treatment. This Laboratory Grown Diamond was created by High Pressure High Temperature (HPHT) growth process. Type II



March 13, 2025
IGI Report Number **LG689535249**
CUSHION BRILLIANT
LABORATORY GROWN DIAMOND
5.57 X 5.19 X 3.65 MM
Carat Weight **0.86 CARAT**
Color Grade **E**
Clarity Grade **SI 1**
Polish **EXCELLENT**
Symmetry **EXCELLENT**
Fluorescence **NONE**
Inscription(s) **IGI LG689535249**

Comments: As Grown - No indication of post-growth treatment. This Laboratory Grown Diamond was created by High Pressure High Temperature (HPHT) growth process. Type II