



INTERNATIONAL GEMOLOGICAL INSTITUTE

LABORATORY GROWN DIAMOND REPORT

March 17, 2025
IGI Report Number **LG690510756**
Description **LABORATORY GROWN DIAMOND**
Shape and Cutting Style **PRINCESS CUT**
Measurements **4.38 X 4.34 X 3.10 MM**

GRADING RESULTS

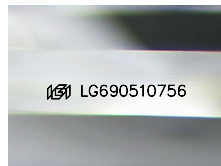
Carat Weight **0.53 CARAT**
Color Grade **D**
Clarity Grade **VVS 1**

ADDITIONAL GRADING INFORMATION

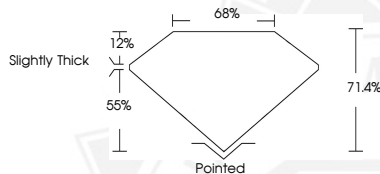
Polish **EXCELLENT**
Symmetry **EXCELLENT**
Fluorescence **NONE**
Inscription(s) **IGI LG690510756**

Comments: As Grown - No indication of post-growth treatment.
This Laboratory Grown Diamond was created by High Pressure High Temperature (HPHT) growth process.
Type II

ELECTRONIC COPY



Sample Image Used



March 17, 2025
IGI Report Number **LG690510756**
PRINCESS CUT
LABORATORY GROWN DIAMOND
4.38 X 4.34 X 3.10 MM
Carat Weight **0.53 CARAT**
Color Grade **D**
Clarity Grade **VVS 1**
Polish **EXCELLENT**
Symmetry **EXCELLENT**
Fluorescence **NONE**
Inscription(s) **IGI LG690510756**

Comments: As Grown - No indication of post-growth treatment. This Laboratory Grown Diamond was created by High Pressure High Temperature (HPHT) growth process. Type II



March 17, 2025
IGI Report Number **LG690510756**
PRINCESS CUT
LABORATORY GROWN DIAMOND
4.38 X 4.34 X 3.10 MM
Carat Weight **0.53 CARAT**
Color Grade **D**
Clarity Grade **VVS 1**
Polish **EXCELLENT**
Symmetry **EXCELLENT**
Fluorescence **NONE**
Inscription(s) **IGI LG690510756**

Comments: As Grown - No indication of post-growth treatment. This Laboratory Grown Diamond was created by High Pressure High Temperature (HPHT) growth process. Type II



THIS DOCUMENT WAS PRODUCED WITH THE FOLLOWING SECURITY MEASURES: SPECIAL DOCUMENT PAPER, INK SCREENS, WATERMARK, BACKGROUND DESIGNS, HOLOGRAM AND OTHER SECURITY FEATURES NOT LISTED AND DO EXCEED DOCUMENT SECURITY INDUSTRY GUIDELINES.

For terms & conditions and to verify this report, please visit www.igi.org