



# INTERNATIONAL GEMOLOGICAL INSTITUTE

## DIAMOND REPORT

April 4, 2025  
IGI Report Number **692521216**  
Description **NATURAL DIAMOND**  
Shape and Cutting Style **ROUND BRILLIANT**  
Measurements **4.31 - 4.34 X 2.71 MM**

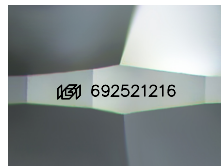
### GRADING RESULTS

Carat Weight **0.31 CARAT**  
Color Grade **G**  
Clarity Grade **VS 2**  
Cut Grade **EXCELLENT**

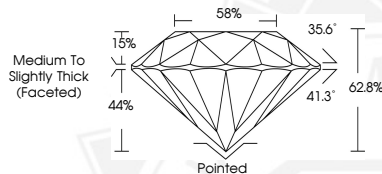
### ADDITIONAL GRADING INFORMATION

Polish **EXCELLENT**  
Symmetry **EXCELLENT**  
Fluorescence **NONE**  
Identification Features **FEATHER, CLOUD**  
Inscription(s) **IGI 692521216**

ELECTRONIC COPY



Sample Image Used



April 4, 2025  
IGI Report Number **692521216**  
ROUND BRILLIANT  
NATURAL DIAMOND  
4.31 - 4.34 X 2.71 MM  
Carat Weight **0.31 CARAT**  
Color Grade **G**  
Clarity Grade **VS 2**  
Cut Grade **EXCELLENT**  
Polish **EXCELLENT**  
Symmetry **EXCELLENT**  
Fluorescence **NONE**  
Inscription(s) **IGI 692521216**



April 4, 2025  
IGI Report Number **692521216**  
ROUND BRILLIANT  
NATURAL DIAMOND  
4.31 - 4.34 X 2.71 MM  
Carat Weight **0.31 CARAT**  
Color Grade **G**  
Clarity Grade **VS 2**  
Cut Grade **EXCELLENT**  
Polish **EXCELLENT**  
Symmetry **EXCELLENT**  
Fluorescence **NONE**  
Inscription(s) **IGI 692521216**



THIS DOCUMENT WAS PRODUCED WITH THE FOLLOWING SECURITY MEASURES: SPECIAL DOCUMENT PAPER, INK SCREENS, WATERMARK, BACKGROUND DESIGNS, HOLOGRAM AND OTHER SECURITY FEATURES NOT LISTED AND DO EXCEED DOCUMENT SECURITY INDUSTRY GUIDELINES.

For terms & conditions and to verify this report, please visit [www.igi.org](http://www.igi.org)