



# INTERNATIONAL GEMOLOGICAL INSTITUTE

## LABORATORY GROWN DIAMOND REPORT

April 2, 2025  
IGI Report Number **LG693541141**  
Description **LABORATORY GROWN DIAMOND**  
Shape and Cutting Style **ROUND BRILLIANT**  
Measurements **4.16 - 4.19 X 2.58 MM**

### GRADING RESULTS

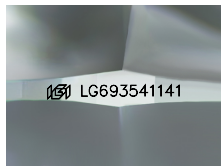
Carat Weight **0.27 CARAT**  
Color Grade **D**  
Clarity Grade **VVS 1**  
Cut Grade **VERY GOOD**

### ADDITIONAL GRADING INFORMATION

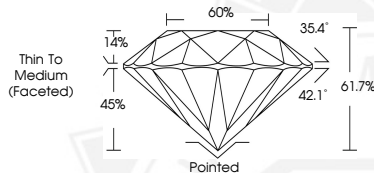
Polish **VERY GOOD**  
Symmetry **VERY GOOD**  
Fluorescence **NONE**  
Inscription(s) **IGI LG693541141**

Comments: As Grown - No indication of post-growth treatment.  
This Laboratory Grown Diamond was created by High Pressure High Temperature (HPHT) growth process.  
Type II

ELECTRONIC COPY



Sample Image Used



April 2, 2025

IGI Report Number **LG693541141**  
**ROUND BRILLIANT**  
**LABORATORY GROWN DIAMOND**  
**4.16 - 4.19 X 2.58 MM**  
Carat Weight **0.27 CARAT**  
Color Grade **D**  
Clarity Grade **VVS 1**  
Cut Grade **VERY GOOD**  
Polish **VERY GOOD**  
Symmetry **VERY GOOD**  
Fluorescence **NONE**  
Inscription(s) **IGI LG693541141**

Comments: As Grown - No indication of post-growth treatment. This Laboratory Grown Diamond was created by High Pressure High Temperature (HPHT) growth process. Type II



April 2, 2025

IGI Report Number **LG693541141**  
**ROUND BRILLIANT**  
**LABORATORY GROWN DIAMOND**  
**4.16 - 4.19 X 2.58 MM**  
Carat Weight **0.27 CARAT**  
Color Grade **D**  
Clarity Grade **VVS 1**  
Cut Grade **VERY GOOD**  
Polish **VERY GOOD**  
Symmetry **VERY GOOD**  
Fluorescence **NONE**  
Inscription(s) **IGI LG693541141**

Comments: As Grown - No indication of post-growth treatment. This Laboratory Grown Diamond was created by High Pressure High Temperature (HPHT) growth process. Type II



THIS DOCUMENT WAS PRODUCED WITH THE FOLLOWING SECURITY MEASURES: SPECIAL DOCUMENT PAPER, INK SCREENS, WATERMARK, BACKGROUND DESIGNS, HOLOGRAM AND OTHER SECURITY FEATURES NOT LISTED AND DO EXCEED DOCUMENT SECURITY INDUSTRY GUIDELINES.

For terms & conditions and to verify this report, please visit [www.igi.org](http://www.igi.org)