



**INTERNATIONAL  
GEMOLOGICAL  
INSTITUTE**

**LABORATORY GROWN DIAMOND REPORT**

April 2, 2025  
 IGI Report Number **LG693541144**  
 Description **LABORATORY GROWN DIAMOND**  
 Shape and Cutting Style **ROUND BRILLIANT**  
 Measurements **4.13 - 4.22 X 2.50 MM**

**GRADING RESULTS**

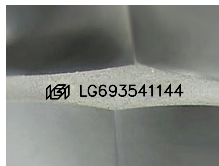
Carat Weight **0.27 CARAT**  
 Color Grade **D**  
 Clarity Grade **VS 1**  
 Cut Grade **FAIR**

**ADDITIONAL GRADING INFORMATION**

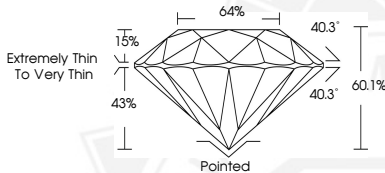
Polish **VERY GOOD**  
 Symmetry **FAIR**  
 Fluorescence **NONE**  
 Inscription(s) **IGI LG693541144**

Comments: As Grown - No indication of post-growth treatment. This Laboratory Grown Diamond was created by High Pressure High Temperature (HPHT) growth process. Type II

**ELECTRONIC COPY**



Sample Image Used



April 2, 2025  
 IGI Report Number **LG693541144**  
 ROUND BRILLIANT  
 LABORATORY GROWN DIAMOND  
 4.13 - 4.22 X 2.50 MM  
 Carat Weight **0.27 CARAT**  
 Color Grade **D**  
 Clarity Grade **VS 1**  
 Cut Grade **FAIR**  
 Polish **VERY GOOD**  
 Symmetry **FAIR**  
 Fluorescence **NONE**  
 Inscription(s) **IGI LG693541144**

Comments: As Grown - No indication of post-growth treatment. This Laboratory Grown Diamond was created by High Pressure High Temperature (HPHT) growth process. Type II



April 2, 2025  
 IGI Report Number **LG693541144**  
 ROUND BRILLIANT  
 LABORATORY GROWN DIAMOND  
 4.13 - 4.22 X 2.50 MM  
 Carat Weight **0.27 CARAT**  
 Color Grade **D**  
 Clarity Grade **VS 1**  
 Cut Grade **FAIR**  
 Polish **VERY GOOD**  
 Symmetry **FAIR**  
 Fluorescence **NONE**  
 Inscription(s) **IGI LG693541144**

Comments: As Grown - No indication of post-growth treatment. This Laboratory Grown Diamond was created by High Pressure High Temperature (HPHT) growth process. Type II

THIS DOCUMENT WAS PRODUCED WITH THE FOLLOWING SECURITY MEASURES: SPECIAL DOCUMENT PAPER, INK SCREENS, WATERMARK, BACKGROUND DESIGN, HOLOGRAM AND OTHER SECURITY FEATURES NOT LISTED AND DO EXCEED DOCUMENT SECURITY INDUSTRY GUIDELINES.

For terms & conditions and to verify this report, please visit [www.igi.org](http://www.igi.org)