



INTERNATIONAL GEMOLOGICAL INSTITUTE

DIAMOND REPORT

April 9, 2025
IGI Report Number **695511692**
Description **NATURAL DIAMOND**
Shape and Cutting Style **ROUND BRILLIANT**
Measurements **5.65 - 5.73 X 3.55 MM**

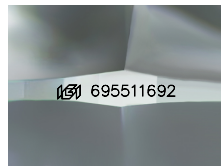
GRADING RESULTS

Carat Weight **0.70 CARAT**
Color Grade **K**
Clarity Grade **VVS 2**
Cut Grade **EXCELLENT**

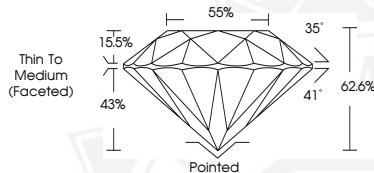
ADDITIONAL GRADING INFORMATION

Polish **EXCELLENT**
Symmetry **EXCELLENT**
Fluorescence **NONE**
Identification Features **PINPOINT**
Inscription(s) **IGI 695511692**

ELECTRONIC COPY



Sample Image Used



April 9, 2025
IGI Report Number **695511692**
ROUND BRILLIANT
NATURAL DIAMOND
5.65 - 5.73 X 3.55 MM
Carat Weight **0.70 CARAT**
Color Grade **K**
Clarity Grade **VVS 2**
Cut Grade **EXCELLENT**
Polish **EXCELLENT**
Symmetry **EXCELLENT**
Fluorescence **NONE**
Inscription(s) **IGI 695511692**



April 9, 2025
IGI Report Number **695511692**
ROUND BRILLIANT
NATURAL DIAMOND
5.65 - 5.73 X 3.55 MM
Carat Weight **0.70 CARAT**
Color Grade **K**
Clarity Grade **VVS 2**
Cut Grade **EXCELLENT**
Polish **EXCELLENT**
Symmetry **EXCELLENT**
Fluorescence **NONE**
Inscription(s) **IGI 695511692**



THIS DOCUMENT WAS PRODUCED WITH THE FOLLOWING SECURITY MEASURES: SPECIAL DOCUMENT PAPER, INK SCREENS, WATERMARK, BACKGROUND DESIGNS, HOLOGRAM AND OTHER SECURITY FEATURES NOT LISTED AND DO EXCEED DOCUMENT SECURITY INDUSTRY GUIDELINES.

For terms & conditions and to verify this report, please visit www.igi.org