



**INTERNATIONAL
GEMOLOGICAL
INSTITUTE**

LABORATORY GROWN DIAMOND REPORT

May 12, 2025
 IGI Report Number **LG705547473**
 Description **LABORATORY GROWN DIAMOND**
 Shape and Cutting Style **ROUND BRILLIANT**
 Measurements **4.65 - 4.69 X 2.90 MM**

GRADING RESULTS

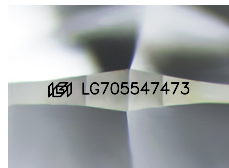
Carat Weight **0.38 CARAT**
 Color Grade **D**
 Clarity Grade **VS 1**
 Cut Grade **IDEAL**

ADDITIONAL GRADING INFORMATION

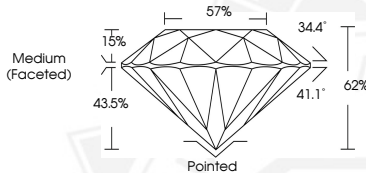
Polish **EXCELLENT**
 Symmetry **EXCELLENT**
 Fluorescence **NONE**
 Inscription(s) **IGI LG705547473**

Comments: This Laboratory Grown Diamond was created by
 Chemical Vapor Deposition (CVD) growth process.
 Type IIa

ELECTRONIC COPY



Sample Image Used



May 12, 2025
 IGI Report Number **LG705547473**
 ROUND BRILLIANT
 LABORATORY GROWN DIAMOND
 4.65 - 4.69 X 2.90 MM
 Carat Weight **0.38 CARAT**
 Color Grade **D**
 Clarity Grade **VS 1**
 Cut Grade **IDEAL**
 Polish **EXCELLENT**
 Symmetry **EXCELLENT**
 Fluorescence **NONE**
 Inscription(s) **IGI LG705547473**

Comments: This Laboratory Grown
 Diamond was created by
 Chemical Vapor Deposition (CVD)
 growth process. Type IIa



May 12, 2025
 IGI Report Number **LG705547473**
 ROUND BRILLIANT
 LABORATORY GROWN DIAMOND
 4.65 - 4.69 X 2.90 MM
 Carat Weight **0.38 CARAT**
 Color Grade **D**
 Clarity Grade **VS 1**
 Cut Grade **IDEAL**
 Polish **EXCELLENT**
 Symmetry **EXCELLENT**
 Fluorescence **NONE**
 Inscription(s) **IGI LG705547473**

Comments: This Laboratory Grown
 Diamond was created by
 Chemical Vapor Deposition (CVD)
 growth process. Type IIa

THIS DOCUMENT WAS PRODUCED WITH THE FOLLOWING SECURITY MEASURES: SPECIAL DOCUMENT PAPER, INK SCREENS, WATERMARK, BACKGROUND DESIGN, HOLOGRAM AND OTHER SECURITY FEATURES NOT LISTED AND DO EXCEED DOCUMENT SECURITY INDUSTRY GUIDELINES.

For terms & conditions and to verify this report, please visit www.igi.org