



INTERNATIONAL GEMOLOGICAL INSTITUTE

LABORATORY GROWN DIAMOND REPORT

November 21, 2025

IGI Report Number

LG707511481

Description

LABORATORY GROWN DIAMOND

Shape and Cutting Style

FREEFORM FACETED

Measurements

7.02 X 5.49 X 3.03 MM

GRADING RESULTS

Carat Weight

0.76 CARAT

Color Grade

E

Clarity Grade

VS 1

ADDITIONAL GRADING INFORMATION

Polish

EXCELLENT

Symmetry

EXCELLENT

Fluorescence

NONE

Inscription(s)

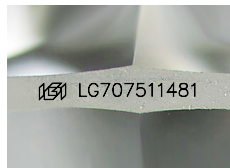
IGI LG707511481

Comments: Mounting feature is present.

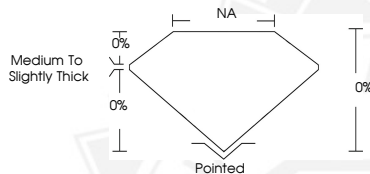
This Laboratory Grown Diamond was created by Chemical Vapor Deposition (CVD) growth process.

Type IIa

ELECTRONIC COPY



Sample Image Used



November 21, 2025

IGI Report Number LG707511481

FREEFORM FACETED

LABORATORY GROWN DIAMOND

7.02 X 5.49 X 3.03 MM

Carat Weight 0.76 CARAT

Color Grade E

Clarity Grade VS 1

Polish EXCELLENT

Symmetry EXCELLENT

Fluorescence NONE

Inscription(s) IGI LG707511481

Comments: Mounting feature is present. This Laboratory Grown Diamond was created by Chemical Vapor Deposition (CVD) growth process. Type IIa



November 21, 2025

IGI Report Number LG707511481

FREEFORM FACETED

LABORATORY GROWN DIAMOND

7.02 X 5.49 X 3.03 MM

Carat Weight 0.76 CARAT

Color Grade E

Clarity Grade VS 1

Polish EXCELLENT

Symmetry EXCELLENT

Fluorescence NONE

Inscription(s) IGI LG707511481

Comments: Mounting feature is present. This Laboratory Grown Diamond was created by Chemical Vapor Deposition (CVD) growth process. Type IIa



THIS DOCUMENT WAS PRODUCED WITH THE FOLLOWING SECURITY MEASURES: SPECIAL DOCUMENT PAPER, INK SCREENS, WATERMARK, BACKGROUND DESIGNS, HOLOGRAM AND OTHER SECURITY FEATURES NOT LISTED AND DO EXCEED DOCUMENT SECURITY INDUSTRY GUIDELINES.

For terms & conditions and to verify this report, please visit www.igi.org