



March 10, 2026

**IGI Report Number** LG707511709  
**FREEFORM FACETED**  
**LABORATORY GROWN DIAMOND**  
**6.98 X 5.33 X 2.96 MM**

**0.85 CARAT**  
**E**  
**VVS 2**  
**EXCELLENT**  
**EXCELLENT**  
**NONE**  
**IGI LG707511709**

Comments: This Laboratory Grown Diamond was created by Chemical Vapor Deposition (CVD) growth process. Type IIa

**LABORATORY GROWN DIAMOND REPORT**

March 10, 2026  
IGI Report Number **LG707511709**  
Description **LABORATORY GROWN DIAMOND**  
Shape and Cutting Style **FREEFORM FACETED**  
Measurements **6.98 X 5.33 X 2.96 MM**

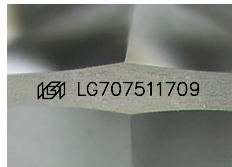
**GRADING RESULTS**

Carat Weight **0.85 CARAT**  
Color Grade **E**  
Clarity Grade **VVS 2**

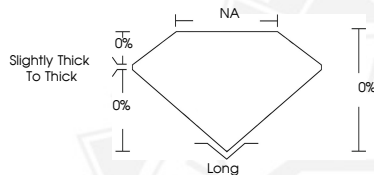
**ADDITIONAL GRADING INFORMATION**

Polish **EXCELLENT**  
Symmetry **EXCELLENT**  
Fluorescence **NONE**  
Inscription(s) **IGI LG707511709**

Comments: This Laboratory Grown Diamond was created by Chemical Vapor Deposition (CVD) growth process. Type IIa



Sample Image Used



March 10, 2026

**IGI Report Number** LG707511709  
**FREEFORM FACETED**  
**LABORATORY GROWN DIAMOND**  
**6.98 X 5.33 X 2.96 MM**

**0.85 CARAT**  
**E**  
**VVS 2**  
**EXCELLENT**  
**EXCELLENT**  
**NONE**  
**IGI LG707511709**

Comments: This Laboratory Grown Diamond was created by Chemical Vapor Deposition (CVD) growth process. Type IIa



THIS DOCUMENT WAS PRODUCED WITH THE FOLLOWING SECURITY MEASURES: SPECIAL DOCUMENT PAPER, INK SCREENS, WATERMARK, BACKGROUND DESIGNS, HOLOGRAM AND OTHER SECURITY FEATURES NOT LISTED AND DO EXCEED DOCUMENT SECURITY INDUSTRY GUIDELINES.