



INTERNATIONAL GEMOLOGICAL INSTITUTE

DIAMOND REPORT

June 13, 2025
IGI Report Number **710528982**
Description **NATURAL DIAMOND**
Shape and Cutting Style **CUT CORNERED RECTANGULAR MODIFIED
BRILLIANT**
Measurements **5.05 X 3.88 X 2.79 MM**

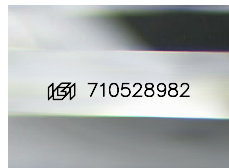
GRADING RESULTS

Carat Weight **0.51 CARAT**
Color Grade **L**
Clarity Grade **VS 1**
Cut Grade **VERY GOOD**

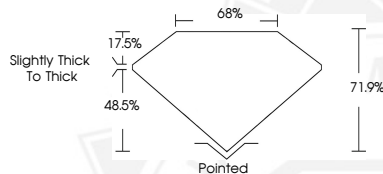
ADDITIONAL GRADING INFORMATION

Polish **EXCELLENT**
Symmetry **EXCELLENT**
Fluorescence **STRONG**
Identification Features **CLOUD, FEATHER**
Inscription(s) **IGI 710528982**

ELECTRONIC COPY



Sample Image Used



June 13, 2025
IGI Report Number **710528982**
CUT CORNERED RECTANGULAR
MODIFIED BRILLIANT
NATURAL DIAMOND
5.05 X 3.88 X 2.79 MM
Carat Weight **0.51 CARAT**
Color Grade **L**
Clarity Grade **VS 1**
Cut Grade **VERY GOOD**
Polish **EXCELLENT**
Symmetry **EXCELLENT**
Fluorescence **STRONG**
Inscription(s) **IGI 710528982**



June 13, 2025
IGI Report Number **710528982**
CUT CORNERED RECTANGULAR
MODIFIED BRILLIANT
NATURAL DIAMOND
5.05 X 3.88 X 2.79 MM
Carat Weight **0.51 CARAT**
Color Grade **L**
Clarity Grade **VS 1**
Cut Grade **VERY GOOD**
Polish **EXCELLENT**
Symmetry **EXCELLENT**
Fluorescence **STRONG**
Inscription(s) **IGI 710528982**



THIS DOCUMENT WAS PRODUCED WITH THE FOLLOWING SECURITY MEASURES: SPECIAL DOCUMENT PAPER, INK SCREENS, WATERMARK, BACKGROUND DESIGN, HOLOGRAM AND OTHER SECURITY FEATURES NOT LISTED AND DO EXCEED DOCUMENT SECURITY INDUSTRY GUIDELINES.

For terms & conditions and to verify this report, please visit www.igi.org