



July 21, 2025

IGI Report Number 719525601

ROUND BRILLIANT

NATURAL DIAMOND

4.35 - 4.37 X 2.64 MM

Carat Weight 0.31 CARAT

Color Grade L

Clarity Grade VS 1

Cut Grade EXCELLENT

Polish EXCELLENT

Symmetry EXCELLENT

Fluorescence SLIGHT

Inscription(s) IGI 719525601

Comments: IDEAL CUT ROUND

BRILLIANT

DIAMOND REPORT

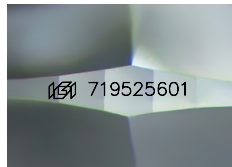
July 21, 2025
IGI Report Number 719525601
Description NATURAL DIAMOND
Shape and Cutting Style ROUND BRILLIANT
Measurements 4.35 - 4.37 X 2.64 MM

GRADING RESULTS

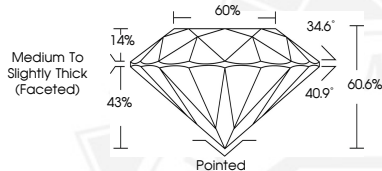
Carat Weight 0.31 CARAT
Color Grade L
Clarity Grade VS 1
Cut Grade EXCELLENT

ADDITIONAL GRADING INFORMATION

Polish EXCELLENT
Symmetry EXCELLENT
Fluorescence SLIGHT
Identification Features CAVITY, FEATHER, PINPOINT
Inscription(s) IGI 719525601
Comments: IDEAL CUT ROUND BRILLIANT



Sample Image Used



July 21, 2025

IGI Report Number 719525601

ROUND BRILLIANT

NATURAL DIAMOND

4.35 - 4.37 X 2.64 MM

Carat Weight 0.31 CARAT

Color Grade L

Clarity Grade VS 1

Cut Grade EXCELLENT

Polish EXCELLENT

Symmetry EXCELLENT

Fluorescence SLIGHT

Inscription(s) IGI 719525601

Comments: IDEAL CUT ROUND

BRILLIANT



THIS DOCUMENT WAS PRODUCED WITH THE FOLLOWING SECURITY MEASURES: SPECIAL DOCUMENT PAPER, INK SCREENS, WATERMARK, BACKGROUND DESIGNS, HOLOGRAM AND OTHER SECURITY FEATURES NOT LISTED AND DO EXCEED DOCUMENT SECURITY INDUSTRY GUIDELINES.