



July 21, 2025

IGI Report Number 719525606

ROUND BRILLIANT

NATURAL DIAMOND

4.43 - 4.46 X 2.72 MM

Carat Weight 0.32 CARAT

Color Grade K

Clarity Grade VS 1

Cut Grade EXCELLENT

Polish EXCELLENT

Symmetry EXCELLENT

Fluorescence VERY SLIGHT

Inscription(s) IGI 719525606

Comments: IDEAL CUT ROUND

BRILLIANT

DIAMOND REPORT

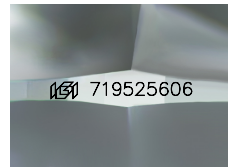
July 21, 2025 719525606
 IGI Report Number
 Description NATURAL DIAMOND
 Shape and Cutting Style ROUND BRILLIANT
 Measurements 4.43 - 4.46 X 2.72 MM

GRADING RESULTS

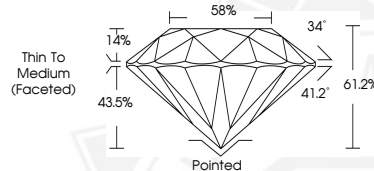
Carat Weight 0.32 CARAT
 Color Grade K
 Clarity Grade VS 1
 Cut Grade EXCELLENT

ADDITIONAL GRADING INFORMATION

Polish EXCELLENT
 Symmetry EXCELLENT
 Fluorescence VERY SLIGHT
 Identification Features FEATHER, CRYSTAL
 Inscription(s) IGI 719525606
 Comments: IDEAL CUT ROUND BRILLIANT



Sample Image Used



July 21, 2025

IGI Report Number 719525606

ROUND BRILLIANT

NATURAL DIAMOND

4.43 - 4.46 X 2.72 MM

Carat Weight 0.32 CARAT

Color Grade K

Clarity Grade VS 1

Cut Grade EXCELLENT

Polish EXCELLENT

Symmetry EXCELLENT

Fluorescence VERY SLIGHT

Inscription(s) IGI 719525606

Comments: IDEAL CUT ROUND

BRILLIANT



THIS DOCUMENT WAS PRODUCED WITH THE FOLLOWING SECURITY MEASURES: SPECIAL DOCUMENT PAPER, INK SCREENS, WATERMARK, BACKGROUND DESIGNS, HOLOGRAM AND OTHER SECURITY FEATURES NOT LISTED AND DO EXCEED DOCUMENT SECURITY INDUSTRY GUIDELINES.