



INTERNATIONAL GEMOLOGICAL INSTITUTE

DIAMOND REPORT

August 5, 2025

IGI Report Number

719527836

Description

NATURAL DIAMOND

Shape and Cutting Style

ROUND BRILLIANT

Measurements

4.89 - 4.91 X 3.04 MM

GRADING RESULTS

Carat Weight

0.45 CARAT

Color Grade

G

Clarity Grade

VVS 2

Cut Grade

EXCELLENT

ADDITIONAL GRADING INFORMATION

Polish

EXCELLENT

Symmetry

EXCELLENT

Fluorescence

VERY SLIGHT

Identification Features

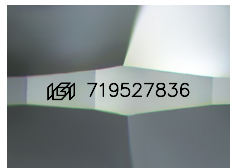
FEATHER, PINPOINT

Inscription(s)

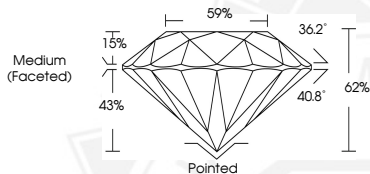
IGI 719527836

Comments: IDEAL CUT ROUND BRILLIANT

ELECTRONIC COPY



Sample Image Used



August 5, 2025

IGI Report Number 719527836

ROUND BRILLIANT

NATURAL DIAMOND

4.89 - 4.91 X 3.04 MM

Carat Weight 0.45 CARAT

Color Grade G

Clarity Grade VVS 2

Cut Grade EXCELLENT

Polish EXCELLENT

Symmetry EXCELLENT

Fluorescence VERY SLIGHT

Inscription(s) IGI 719527836

Comments: IDEAL CUT ROUND

BRILLIANT



August 5, 2025

IGI Report Number 719527836

ROUND BRILLIANT

NATURAL DIAMOND

4.89 - 4.91 X 3.04 MM

Carat Weight 0.45 CARAT

Color Grade G

Clarity Grade VVS 2

Cut Grade EXCELLENT

Polish EXCELLENT

Symmetry EXCELLENT

Fluorescence VERY SLIGHT

Inscription(s) IGI 719527836

Comments: IDEAL CUT ROUND

BRILLIANT



THIS DOCUMENT WAS PRODUCED WITH THE FOLLOWING SECURITY MEASURES: SPECIAL DOCUMENT PAPER, INK SCREENS, WATERMARK, BACKGROUND DESIGNS, HOLOGRAM AND OTHER SECURITY FEATURES NOT LISTED AND DO EXCEED DOCUMENT SECURITY INDUSTRY GUIDELINES.

For terms & conditions and to verify this report, please visit www.igi.org