



LABORATORY GROWN DIAMOND REPORT

July 30, 2025
 IGI Report Number **LG726504227**
 Description **LABORATORY GROWN DIAMOND**
 Shape and Cutting Style **TRIANGULAR BRILLIANT**
 Measurements **6.11 X 5.44 X 3.09 MM**

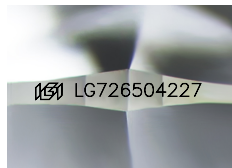
GRADING RESULTS

Carat Weight **0.57 CARAT**
 Color Grade **F**
 Clarity Grade **VS 1**

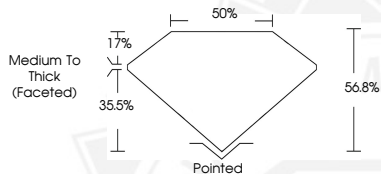
ADDITIONAL GRADING INFORMATION

Polish **VERY GOOD**
 Symmetry **VERY GOOD**
 Fluorescence **NONE**
 Inscription(s) **IGI LG726504227**

Comments: This Laboratory Grown Diamond was created by Chemical Vapor Deposition (CVD) growth process. Type IIa



Sample Image Used



July 30, 2025
 IGI Report Number **LG726504227**
 TRIANGULAR BRILLIANT
 LABORATORY GROWN DIAMOND
 6.11 X 5.44 X 3.09 MM
 Carat Weight **0.57 CARAT**
 Color Grade **F**
 Clarity Grade **VS 1**
 Polish **VERY GOOD**
 Symmetry **VERY GOOD**
 Fluorescence **NONE**
 Inscription(s) **IGI LG726504227**

Comments: This Laboratory Grown Diamond was created by Chemical Vapor Deposition (CVD) growth process. Type IIa



July 30, 2025
 IGI Report Number **LG726504227**
 TRIANGULAR BRILLIANT
 LABORATORY GROWN DIAMOND
 6.11 X 5.44 X 3.09 MM
 Carat Weight **0.57 CARAT**
 Color Grade **F**
 Clarity Grade **VS 1**
 Polish **VERY GOOD**
 Symmetry **VERY GOOD**
 Fluorescence **NONE**
 Inscription(s) **IGI LG726504227**

Comments: This Laboratory Grown Diamond was created by Chemical Vapor Deposition (CVD) growth process. Type IIa



THIS DOCUMENT WAS PRODUCED WITH THE FOLLOWING SECURITY MEASURES: SPECIAL DOCUMENT PAPER, INK SCREENS, WATERMARK, BACKGROUND DESIGNS, HOLOGRAM AND OTHER SECURITY FEATURES NOT LISTED AND DO EXCEED DOCUMENT SECURITY INDUSTRY GUIDELINES.