



LABORATORY GROWN DIAMOND REPORT

September 2, 2025
 IGI Report Number **LG726534133**
 Description **LABORATORY GROWN DIAMOND**
 Shape and Cutting Style **ROUND BRILLIANT**
 Measurements **5.98 - 6.01 X 3.75 MM**

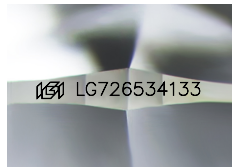
GRADING RESULTS

Carat Weight **0.83 CARAT**
 Color Grade **D**
 Clarity Grade **VVS 2**
 Cut Grade **EXCELLENT**

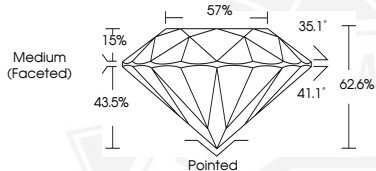
ADDITIONAL GRADING INFORMATION

Polish **EXCELLENT**
 Symmetry **EXCELLENT**
 Fluorescence **NONE**
 Inscription(s) **IGI LG726534133**

Comments: As Grown - No indication of post-growth treatment.
 This Laboratory Grown Diamond was created by High Pressure High
 Temperature (HPHT) growth process.
 Type II



Sample Image Used



September 2, 2025

IGI Report Number **LG726534133**
ROUND BRILLIANT
LABORATORY GROWN DIAMOND
5.98 - 6.01 X 3.75 MM

Carat Weight **0.83 CARAT**
 Color Grade **D**
 Clarity Grade **VVS 2**
 Cut Grade **EXCELLENT**
 Polish **EXCELLENT**
 Symmetry **EXCELLENT**
 Fluorescence **NONE**
 Inscription(s) **IGI LG726534133**

Comments: As Grown - No indication of post-growth treatment. This Laboratory Grown Diamond was created by High Pressure High Temperature (HPHT) growth process. Type II



September 2, 2025

IGI Report Number **LG726534133**
ROUND BRILLIANT
LABORATORY GROWN DIAMOND
5.98 - 6.01 X 3.75 MM

Carat Weight **0.83 CARAT**
 Color Grade **D**
 Clarity Grade **VVS 2**
 Cut Grade **EXCELLENT**
 Polish **EXCELLENT**
 Symmetry **EXCELLENT**
 Fluorescence **NONE**
 Inscription(s) **IGI LG726534133**

Comments: As Grown - No indication of post-growth treatment. This Laboratory Grown Diamond was created by High Pressure High Temperature (HPHT) growth process. Type II

THIS DOCUMENT WAS PRODUCED WITH THE FOLLOWING SECURITY MEASURES: SPECIAL DOCUMENT PAPER, INK SCREENS, WATERMARK, BACKGROUND DESIGNS, HOLOGRAM AND OTHER SECURITY FEATURES NOT LISTED AND DO EXCEED DOCUMENT SECURITY INDUSTRY GUIDELINES.