



# INTERNATIONAL GEMOLOGICAL INSTITUTE

## DIAMOND REPORT

August 26, 2025

IGI Report Number

727539267

Description

NATURAL DIAMOND

Shape and Cutting Style

CUT CORNERED RECTANGULAR MODIFIED  
BRILLIANT

Measurements

5.32 X 3.87 X 2.72 MM

### GRADING RESULTS

Carat Weight

0.50 CARAT

Color Grade

G

Clarity Grade

VS 2

Cut Grade

VERY GOOD

### ADDITIONAL GRADING INFORMATION

Polish

EXCELLENT

Symmetry

EXCELLENT

Fluorescence

NONE

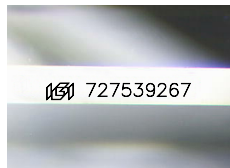
Identification Features

CRYSTAL CLOUD

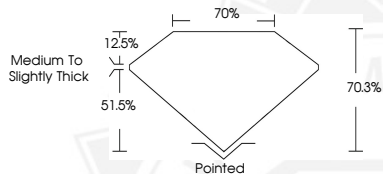
Inscription(s)

IGI 727539267

ELECTRONIC COPY



Sample Image Used



THIS DOCUMENT WAS PRODUCED WITH THE FOLLOWING SECURITY MEASURES: SPECIAL DOCUMENT PAPER, INK SCREENS, WATERMARK, BACKGROUND DESIGNS, HOLOGRAM AND OTHER SECURITY FEATURES NOT LISTED AND DO EXCEED DOCUMENT SECURITY INDUSTRY GUIDELINES.

For terms & conditions and to verify this report, please visit [www.igi.org](http://www.igi.org)



August 26, 2025

IGI Report Number 727539267

CUT CORNERED RECTANGULAR

MODIFIED BRILLIANT

NATURAL DIAMOND

5.32 X 3.87 X 2.72 MM

Carat Weight 0.50 CARAT

Color Grade G

Clarity Grade VS 2

Cut Grade VERY GOOD

Polish EXCELLENT

Symmetry EXCELLENT

Fluorescence NONE

Inscription(s) IGI 727539267



August 26, 2025

IGI Report Number 727539267

CUT CORNERED RECTANGULAR

MODIFIED BRILLIANT

NATURAL DIAMOND

5.32 X 3.87 X 2.72 MM

Carat Weight 0.50 CARAT

Color Grade G

Clarity Grade VS 2

Cut Grade VERY GOOD

Polish EXCELLENT

Symmetry EXCELLENT

Fluorescence NONE

Inscription(s) IGI 727539267