



September 3, 2025

IGI Report Number 727540273

EMERALD CUT

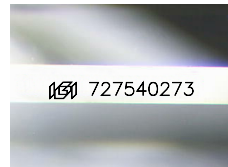
NATURAL DIAMOND

5.44 X 3.82 X 2.67 MM

| | |
|----------------|---------------|
| Carat Weight | 0.53 CARAT |
| Color Grade | I |
| Clarity Grade | VVS 1 |
| Cut Grade | VERY GOOD |
| Polish | EXCELLENT |
| Symmetry | EXCELLENT |
| Fluorescence | VERY SLIGHT |
| Inscription(s) | IGI 727540273 |

DIAMOND REPORT

| | |
|-------------------------|-----------------------|
| September 3, 2025 | |
| IGI Report Number | 727540273 |
| Description | NATURAL DIAMOND |
| Shape and Cutting Style | EMERALD CUT |
| Measurements | 5.44 X 3.82 X 2.67 MM |



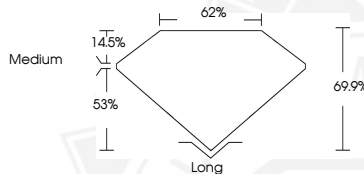
Sample Image Used

GRADING RESULTS

| | |
|---------------|------------|
| Carat Weight | 0.53 CARAT |
| Color Grade | I |
| Clarity Grade | VVS 1 |
| Cut Grade | VERY GOOD |

ADDITIONAL GRADING INFORMATION

| | |
|-------------------------|---------------|
| Polish | EXCELLENT |
| Symmetry | EXCELLENT |
| Fluorescence | VERY SLIGHT |
| Identification Features | FEATHER |
| Inscription(s) | IGI 727540273 |



September 3, 2025

IGI Report Number 727540273

EMERALD CUT

NATURAL DIAMOND

5.44 X 3.82 X 2.67 MM

| | |
|----------------|---------------|
| Carat Weight | 0.53 CARAT |
| Color Grade | I |
| Clarity Grade | VVS 1 |
| Cut Grade | VERY GOOD |
| Polish | EXCELLENT |
| Symmetry | EXCELLENT |
| Fluorescence | VERY SLIGHT |
| Inscription(s) | IGI 727540273 |



THIS DOCUMENT WAS PRODUCED WITH THE FOLLOWING SECURITY MEASURES: SPECIAL DOCUMENT PAPER, INK SCREENS, WATERMARK, BACKGROUND DESIGNS, HOLOGRAM AND OTHER SECURITY FEATURES NOT LISTED AND DO EXCEED DOCUMENT SECURITY INDUSTRY GUIDELINES.