



# INTERNATIONAL GEMOLOGICAL INSTITUTE

## DIAMOND REPORT

September 10, 2025

IGI Report Number

727541368

Description

NATURAL DIAMOND

Shape and Cutting Style

ROUND BRILLIANT

Measurements

5.21 - 5.24 X 3.25 MM

### GRADING RESULTS

Carat Weight

0.55 CARAT

Color Grade

G

Clarity Grade

VS 2

Cut Grade

EXCELLENT

### ADDITIONAL GRADING INFORMATION

Polish

EXCELLENT

Symmetry

EXCELLENT

Fluorescence

NONE

Identification Features

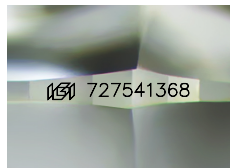
FEATHER, CRYSTAL

Inscription(s)

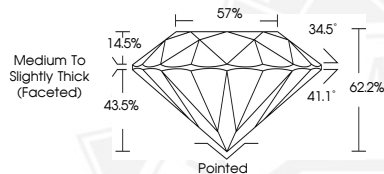
727541368

Comments: IDEAL CUT ROUND BRILLIANT

ELECTRONIC COPY



Sample Image Used



THIS DOCUMENT WAS PRODUCED WITH THE FOLLOWING SECURITY MEASURES: SPECIAL DOCUMENT PAPER, INK SCREENS, WATERMARK, BACKGROUND DESIGNS, HOLOGRAM AND OTHER SECURITY FEATURES NOT LISTED AND DO EXCEED DOCUMENT SECURITY INDUSTRY GUIDELINES.

For terms & conditions and to verify this report, please visit [www.igi.org](http://www.igi.org)



September 10, 2025

IGI Report Number 727541368

ROUND BRILLIANT

NATURAL DIAMOND

5.21 - 5.24 X 3.25 MM

Carat Weight 0.55 CARAT

Color Grade G

Clarity Grade VS 2

Cut Grade EXCELLENT

Polish EXCELLENT

Symmetry EXCELLENT

Fluorescence NONE

Inscription(s) 727541368

Comments: IDEAL CUT ROUND

BRILLIANT



September 10, 2025

IGI Report Number 727541368

ROUND BRILLIANT

NATURAL DIAMOND

5.21 - 5.24 X 3.25 MM

Carat Weight 0.55 CARAT

Color Grade G

Clarity Grade VS 2

Cut Grade EXCELLENT

Polish EXCELLENT

Symmetry EXCELLENT

Fluorescence NONE

Inscription(s) 727541368

Comments: IDEAL CUT ROUND

BRILLIANT