



INTERNATIONAL GEMOLOGICAL INSTITUTE

DIAMOND REPORT

September 12, 2025

IGI Report Number

727542261

Description

NATURAL DIAMOND

Shape and Cutting Style

ROUND BRILLIANT

Measurements

6.15 - 6.21 X 3.91 MM

GRADING RESULTS

Carat Weight

0.94 CARAT

Color Grade

K

Clarity Grade

VS 2

Cut Grade

EXCELLENT

ADDITIONAL GRADING INFORMATION

Polish

EXCELLENT

Symmetry

EXCELLENT

Fluorescence

NONE

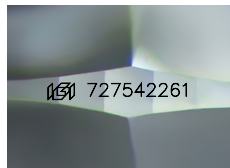
Identification Features

CLOUD, FEATHER, CRYSTAL

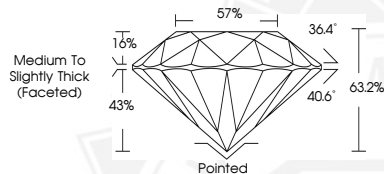
Inscription(s)

IGI 727542261

ELECTRONIC COPY



Sample Image Used



THIS DOCUMENT WAS PRODUCED WITH THE FOLLOWING SECURITY MEASURES: SPECIAL DOCUMENT PAPER, INK SCREENS, WATERMARK, BACKGROUND DESIGNS, HOLOGRAM AND OTHER SECURITY FEATURES NOT LISTED AND DO EXCEED DOCUMENT SECURITY INDUSTRY GUIDELINES.

For terms & conditions and to verify this report, please visit www.igi.org



September 12, 2025

IGI Report Number 727542261

ROUND BRILLIANT

NATURAL DIAMOND

6.15 - 6.21 X 3.91 MM

Carat Weight 0.94 CARAT

Color Grade K

Clarity Grade VS 2

Cut Grade EXCELLENT

Polish EXCELLENT

Symmetry EXCELLENT

Fluorescence NONE

Inscription(s) IGI 727542261



September 12, 2025

IGI Report Number 727542261

ROUND BRILLIANT

NATURAL DIAMOND

6.15 - 6.21 X 3.91 MM

Carat Weight 0.94 CARAT

Color Grade K

Clarity Grade VS 2

Cut Grade EXCELLENT

Polish EXCELLENT

Symmetry EXCELLENT

Fluorescence NONE

Inscription(s) IGI 727542261