



August 18, 2025

IGI Report Number **LG728504537**

**ROUND BRILLIANT
LABORATORY GROWN DIAMOND
4.73 - 4.76 X 2.97 MM**

| | |
|----------------|------------------------|
| Carat Weight | 0.41 CARAT |
| Color Grade | D |
| Clarity Grade | VS 1 |
| Cut Grade | EXCELLENT |
| Polish | VERY GOOD |
| Symmetry | VERY GOOD |
| Fluorescence | NONE |
| Inscription(s) | IGI LG728504537 |

Comments: This Laboratory Grown Diamond was created by Chemical Vapor Deposition (CVD) growth process. Type IIa

LABORATORY GROWN DIAMOND REPORT

August 18, 2025
IGI Report Number **LG728504537**
Description **LABORATORY GROWN DIAMOND**
Shape and Cutting Style **ROUND BRILLIANT**
Measurements **4.73 - 4.76 X 2.97 MM**

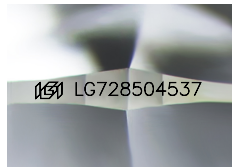
GRADING RESULTS

Carat Weight **0.41 CARAT**
Color Grade **D**
Clarity Grade **VS 1**
Cut Grade **EXCELLENT**

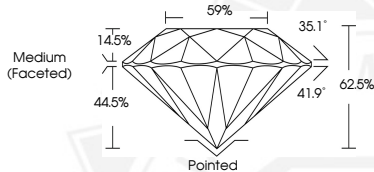
ADDITIONAL GRADING INFORMATION

Polish **VERY GOOD**
Symmetry **VERY GOOD**
Fluorescence **NONE**
Inscription(s) **IGI LG728504537**

Comments: This Laboratory Grown Diamond was created by Chemical Vapor Deposition (CVD) growth process. Type IIa



Sample Image Used



August 18, 2025

IGI Report Number **LG728504537**

**ROUND BRILLIANT
LABORATORY GROWN DIAMOND
4.73 - 4.76 X 2.97 MM**

| | |
|----------------|------------------------|
| Carat Weight | 0.41 CARAT |
| Color Grade | D |
| Clarity Grade | VS 1 |
| Cut Grade | EXCELLENT |
| Polish | VERY GOOD |
| Symmetry | VERY GOOD |
| Fluorescence | NONE |
| Inscription(s) | IGI LG728504537 |

Comments: This Laboratory Grown Diamond was created by Chemical Vapor Deposition (CVD) growth process. Type IIa



THIS DOCUMENT WAS PRODUCED WITH THE FOLLOWING SECURITY MEASURES: SPECIAL DOCUMENT PAPER, INK SCREENS, WATERMARK, BACKGROUND DESIGNS, HOLOGRAM AND OTHER SECURITY FEATURES NOT LISTED AND DO EXCEED DOCUMENT SECURITY INDUSTRY GUIDELINES.