



September 27, 2025

IGI Report Number LG729572014
ROUND BRILLIANT
LABORATORY GROWN DIAMOND
4.98 - 5.08 X 3.03 MM

Carat Weight	0.50 CARAT
Color Grade	F
Clarity Grade	VVS 2
Cut Grade	FAIR
Polish	VERY GOOD
Symmetry	VERY GOOD
Fluorescence	NONE
Inscription(s)	IGI LG729572014

Comments: This Laboratory Grown Diamond was created by Chemical Vapor Deposition (CVD) growth process. Type IIa

LABORATORY GROWN DIAMOND REPORT

September 27, 2025
IGI Report Number **LG729572014**
Description **LABORATORY GROWN DIAMOND**
Shape and Cutting Style **ROUND BRILLIANT**
Measurements **4.98 - 5.08 X 3.03 MM**

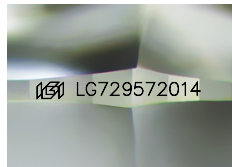
GRADING RESULTS

Carat Weight **0.50 CARAT**
Color Grade **F**
Clarity Grade **VVS 2**
Cut Grade **FAIR**

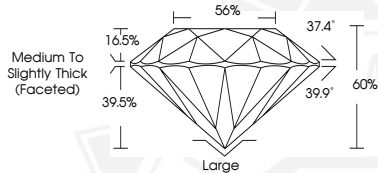
ADDITIONAL GRADING INFORMATION

Polish **VERY GOOD**
Symmetry **VERY GOOD**
Fluorescence **NONE**
Inscription(s) **IGI LG729572014**

Comments: This Laboratory Grown Diamond was created by Chemical Vapor Deposition (CVD) growth process. Type IIa



Sample Image Used



September 27, 2025

IGI Report Number LG729572014
ROUND BRILLIANT
LABORATORY GROWN DIAMOND
4.98 - 5.08 X 3.03 MM

Carat Weight	0.50 CARAT
Color Grade	F
Clarity Grade	VVS 2
Cut Grade	FAIR
Polish	VERY GOOD
Symmetry	VERY GOOD
Fluorescence	NONE
Inscription(s)	IGI LG729572014

Comments: This Laboratory Grown Diamond was created by Chemical Vapor Deposition (CVD) growth process. Type IIa



THIS DOCUMENT WAS PRODUCED WITH THE FOLLOWING SECURITY MEASURES: SPECIAL DOCUMENT PAPER, INK SCREENS, WATERMARK, BACKGROUND DESIGNS, HOLOGRAM AND OTHER SECURITY FEATURES NOT LISTED AND DO EXCEED DOCUMENT SECURITY INDUSTRY GUIDELINES.